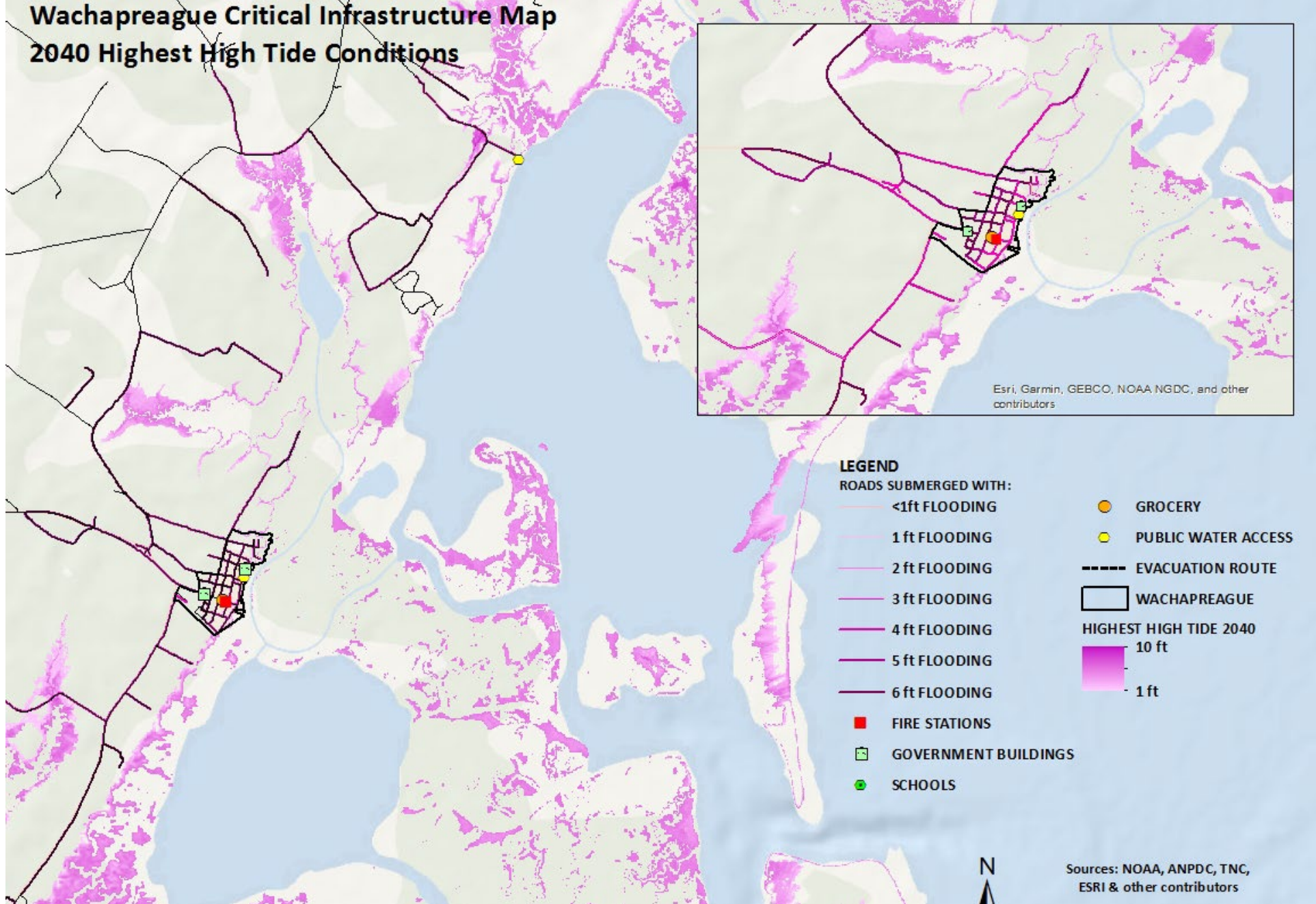
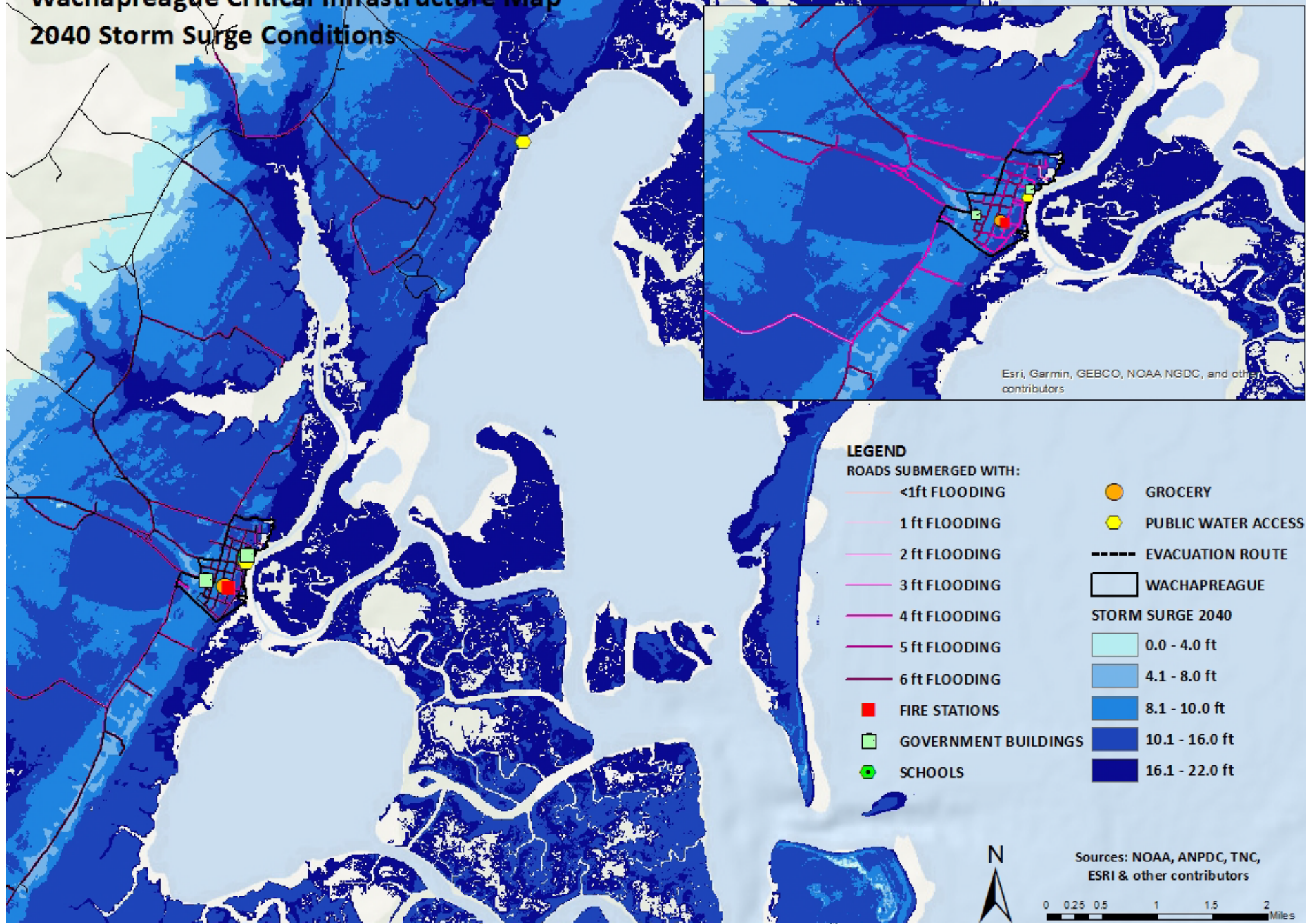


Wachapreague Critical Infrastructure Map 2040 Highest High Tide Conditions



Wachapreague Critical Infrastructure Map

2040 Storm Surge Conditions



Esri, Garmin, GEBCO, NOAA NGDC, and other contributors

LEGEND

ROADS SUBMERGED WITH:

- <1ft FLOODING
- 1 ft FLOODING
- 2 ft FLOODING
- 3 ft FLOODING
- 4 ft FLOODING
- 5 ft FLOODING
- 6 ft FLOODING

- FIRE STATIONS
- GOVERNMENT BUILDINGS
- SCHOOLS

- GROCERY
- PUBLIC WATER ACCESS
- EVACUATION ROUTE
- WACHAPREAGUE

STORM SURGE 2040

- 0.0 - 4.0 ft
- 4.1 - 8.0 ft
- 8.1 - 10.0 ft
- 10.1 - 16.0 ft
- 16.1 - 22.0 ft

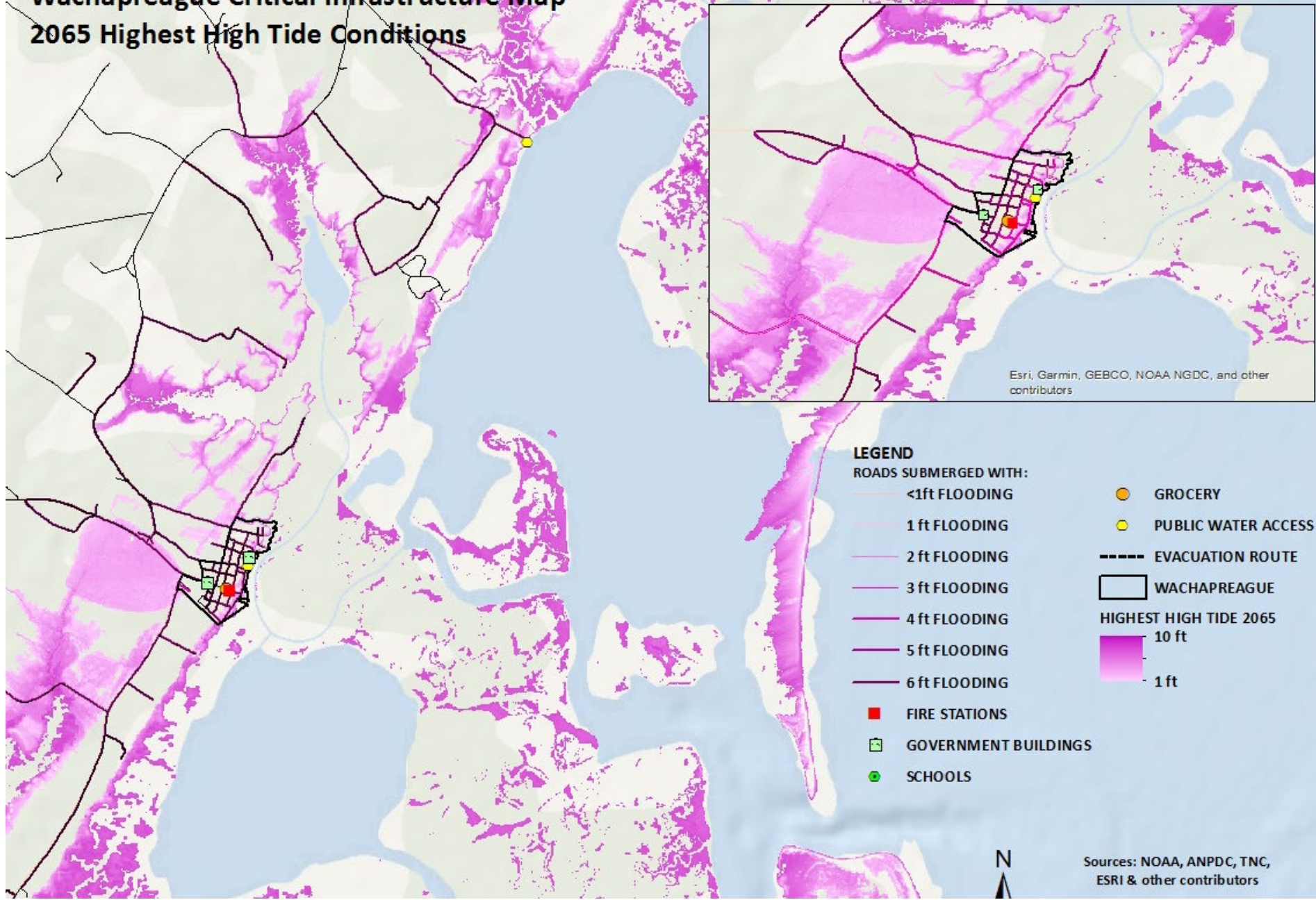


Sources: NOAA, ANPDC, TNC, ESRI & other contributors

0 0.25 0.5 1 1.5 2 Miles

Wachapreague Critical Infrastructure Map

2065 Highest High Tide Conditions



Esri, Garmin, GEBCO, NOAA NGDC, and other contributors

LEGEND

ROADS SUBMERGED WITH:

- <1ft FLOODING
- 1 ft FLOODING
- 2 ft FLOODING
- 3 ft FLOODING
- 4 ft FLOODING
- 5 ft FLOODING
- 6 ft FLOODING

- FIRE STATIONS
- GOVERNMENT BUILDINGS
- SCHOOLS

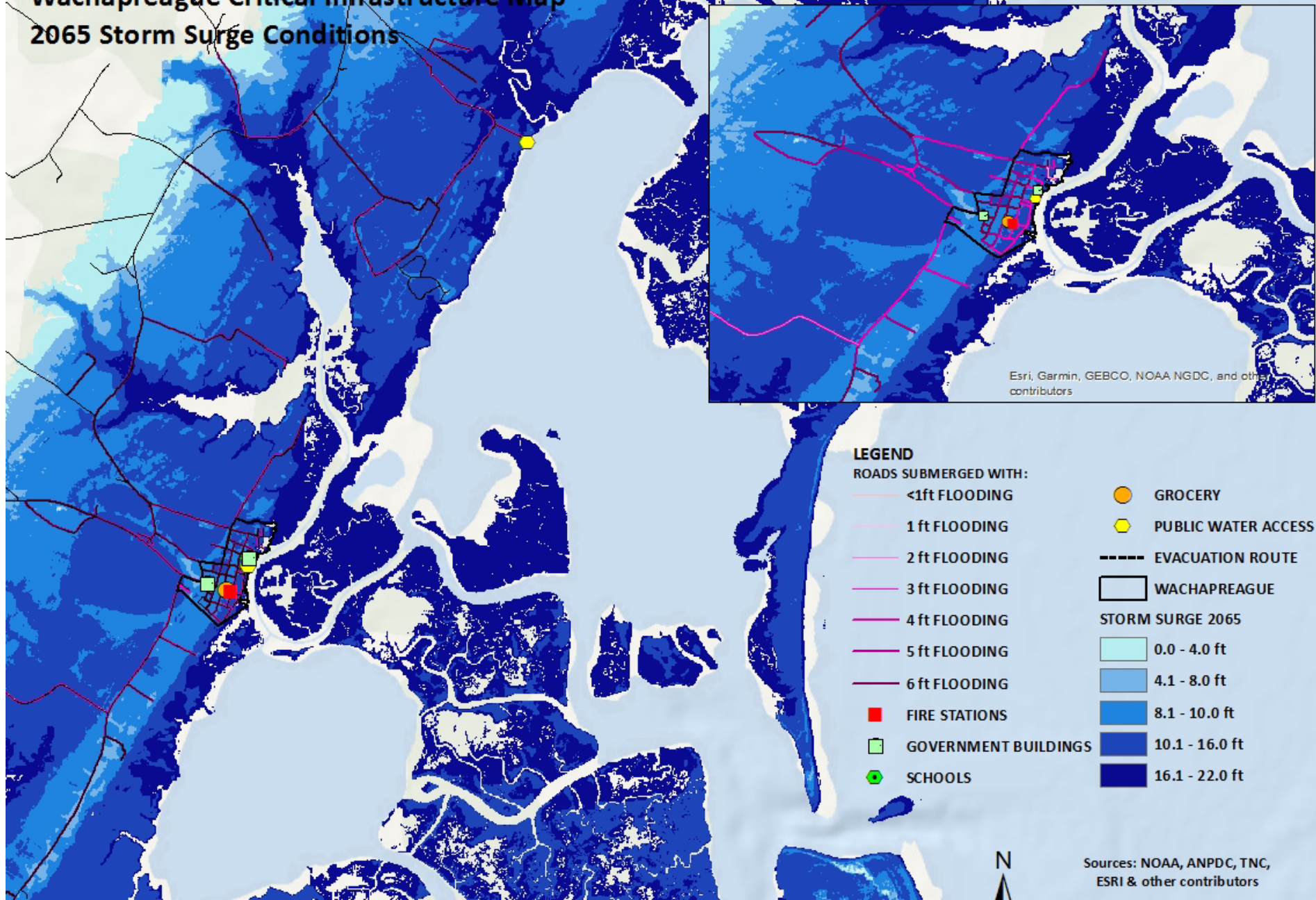
- GROCERY
- PUBLIC WATER ACCESS
- EVACUATION ROUTE
- WACHAPREAGUE
- HIGHEST HIGH TIDE 2065**
- 10 ft
- 1 ft



Sources: NOAA, ANPDC, TNC, ESRI & other contributors

Wachapreague Critical Infrastructure Map

2065 Storm Surge Conditions



LEGEND

ROADS SUBMERGED WITH:

- <1ft FLOODING
- 1 ft FLOODING
- 2 ft FLOODING
- 3 ft FLOODING
- 4 ft FLOODING
- 5 ft FLOODING
- 6 ft FLOODING

- FIRE STATIONS
- GOVERNMENT BUILDINGS
- SCHOOLS

- GROCERY
- PUBLIC WATER ACCESS

- - - - EVACUATION ROUTE
- WACHAPREAGUE

STORM SURGE 2065

- 0.0 - 4.0 ft
- 4.1 - 8.0 ft
- 8.1 - 10.0 ft
- 10.1 - 16.0 ft
- 16.1 - 22.0 ft



Sources: NOAA, ANPDC, TNC, ESRI & other contributors