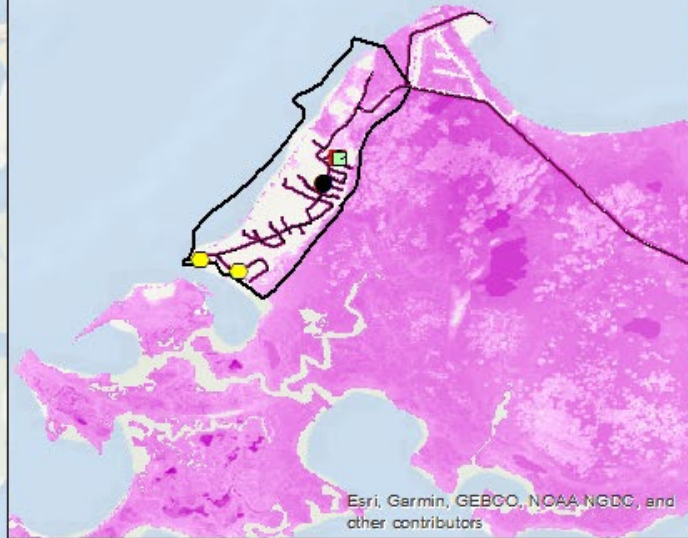


Saxis Critical Infrastructure Map 2040 Highest High Tide Conditions



LEGEND

ROADS INUNDATED WITH:

- <1ft FLOODING
- 1 ft FLOODING
- 2 ft FLOODING
- 3 ft FLOODING
- 4 ft FLOODING
- 5 ft FLOODING
- 6 ft FLOODING

— EVACUATION ROUTE

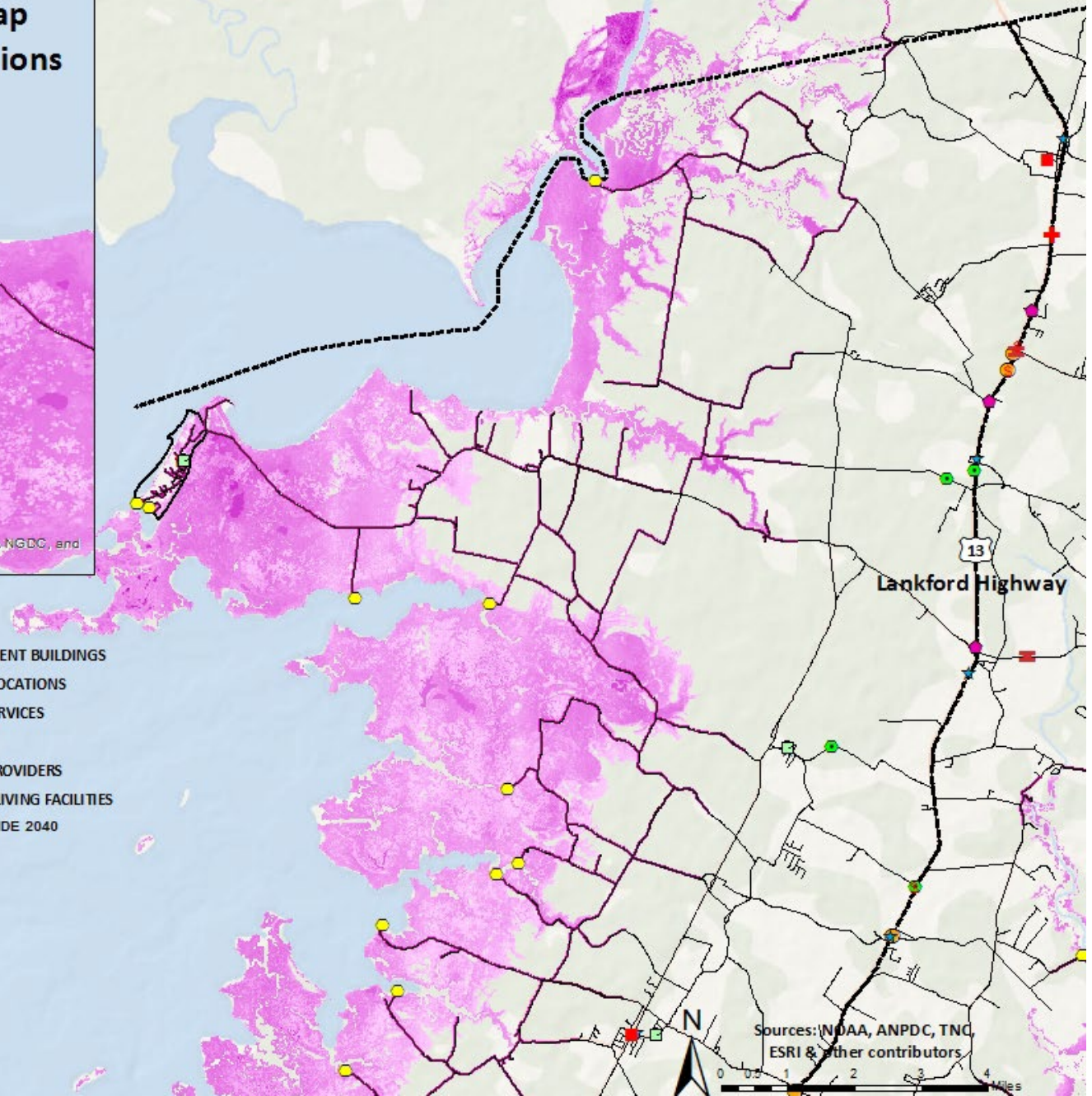
TOWN BOUNDARY SAXIS

- FIRE STATIONS
- \$ BANKS & ATMs
- SCHOOLS
- COMMUNITIES AT-RISK OF LOSING ACCESS
- PUBLIC WATER ACCESS
- ▲ WASTEWATER TREATMENT FACILITIES
- + EMERGENCY CENTERS

- GOVERNMENT BUILDINGS
- TRANSIT LOCATIONS
- ★ POSTAL SERVICES
- GROCERY
- ◆ ENERGY PROVIDERS
- ♠ ASSISTED LIVING FACILITIES

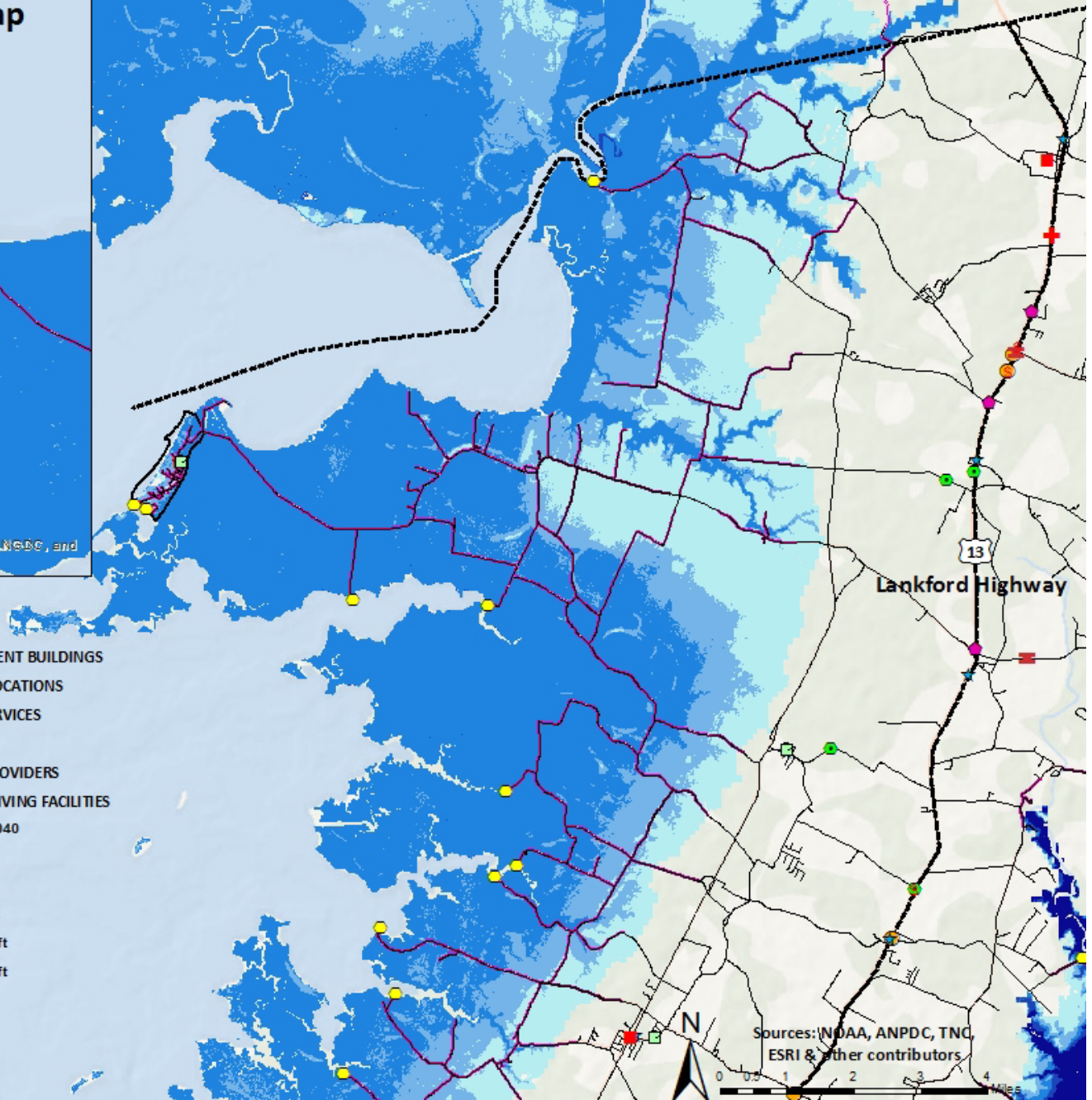
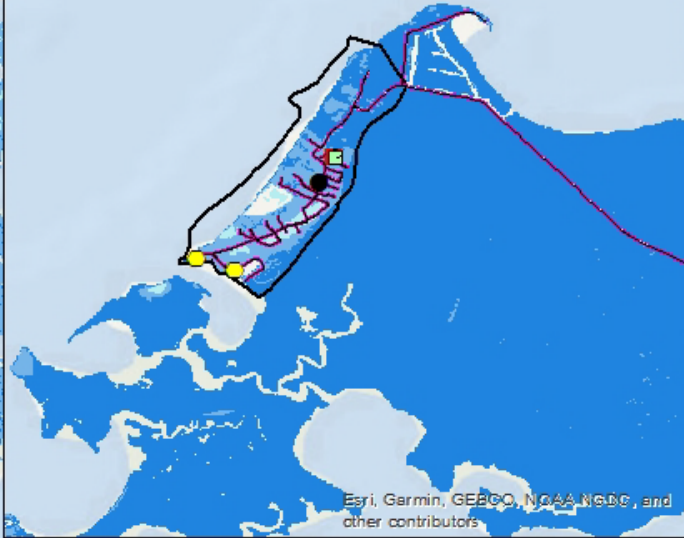
HIGHEST HIGH TIDE 2040

- 10 ft
- 1 ft



Sources: NOAA, ANPDC, TNC, ESRI & other contributors

Saxis Critical Infrastructure Map 2040 Storm Surge Conditions



LEGEND

ROADS INUNDATED WITH:

- <1ft FLOODING
- 1 ft FLOODING
- 2 ft FLOODING
- 3 ft FLOODING
- 4 ft FLOODING
- 5 ft FLOODING
- 6 ft FLOODING

- EVACUATION ROUTE
- TOWN BOUNDARY SAXIS

- FIRE STATIONS
- Ⓢ BANKS & ATMs
- SCHOOLS
- COMMUNITIES AT-RISK OF LOSING ACCESS
- PUBLIC WATER ACCESS
- ▲ WASTEWATER TREATMENT FACILITIES
- + EMERGENCY CENTERS

- GOVERNMENT BUILDINGS
- ▭ TRANSIT LOCATIONS
- ★ POSTAL SERVICES
- GROCERY
- ENERGY PROVIDERS
- 🏠 ASSISTED LIVING FACILITIES

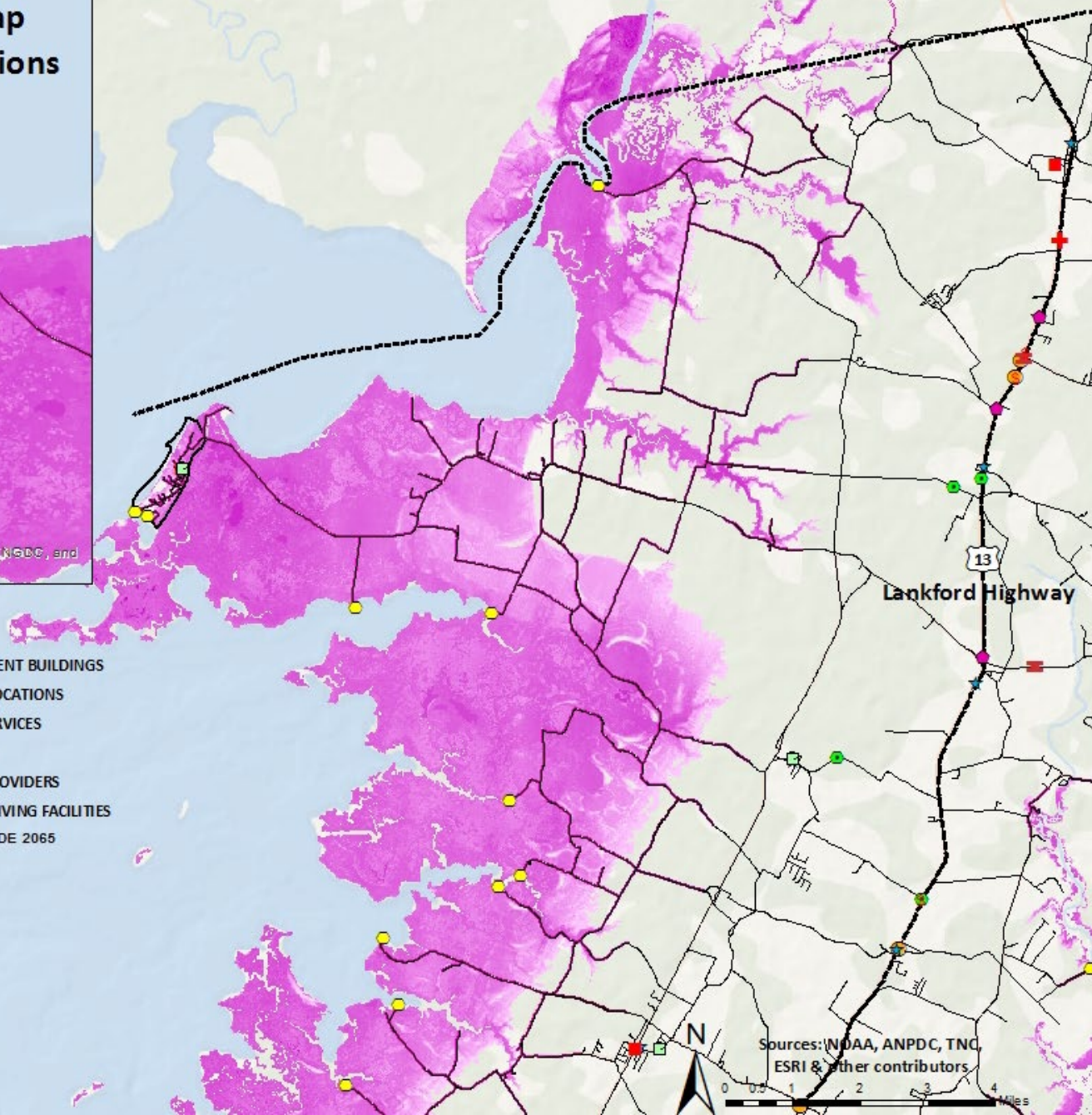
STORM SURGE 2040

- 0.0 - 4.0 ft
- 4.1 - 8.0 ft
- 8.1 - 10.0 ft
- 10.1 - 16.0 ft
- 16.1 - 22.0 ft

Sources: NOAA, ANPDC, TNC, ESRI & other contributors

Saxis Critical Infrastructure Map

2065 Highest High Tide Conditions



LEGEND

ROADS INUNDATED WITH:

- <1ft FLOODING
- 1ft FLOODING
- 2ft FLOODING
- 3ft FLOODING
- 4ft FLOODING
- 5ft FLOODING
- 6ft FLOODING

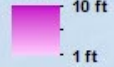
- - - EVACUATION ROUTE

TOWN BOUNDARY SAXIS

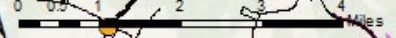
- FIRE STATIONS
- \$ BANKS & ATMs
- SCHOOLS
- COMMUNITIES AT-RISK OF LOSING ACCESS
- PUBLIC WATER ACCESS
- ▲ WASTEWATER TREATMENT FACILITIES
- + EMERGENCY CENTERS

- GOVERNMENT BUILDINGS
- TRANSIT LOCATIONS
- ★ POSTAL SERVICES
- GROCERY
- ◆ ENERGY PROVIDERS
- ASSISTED LIVING FACILITIES

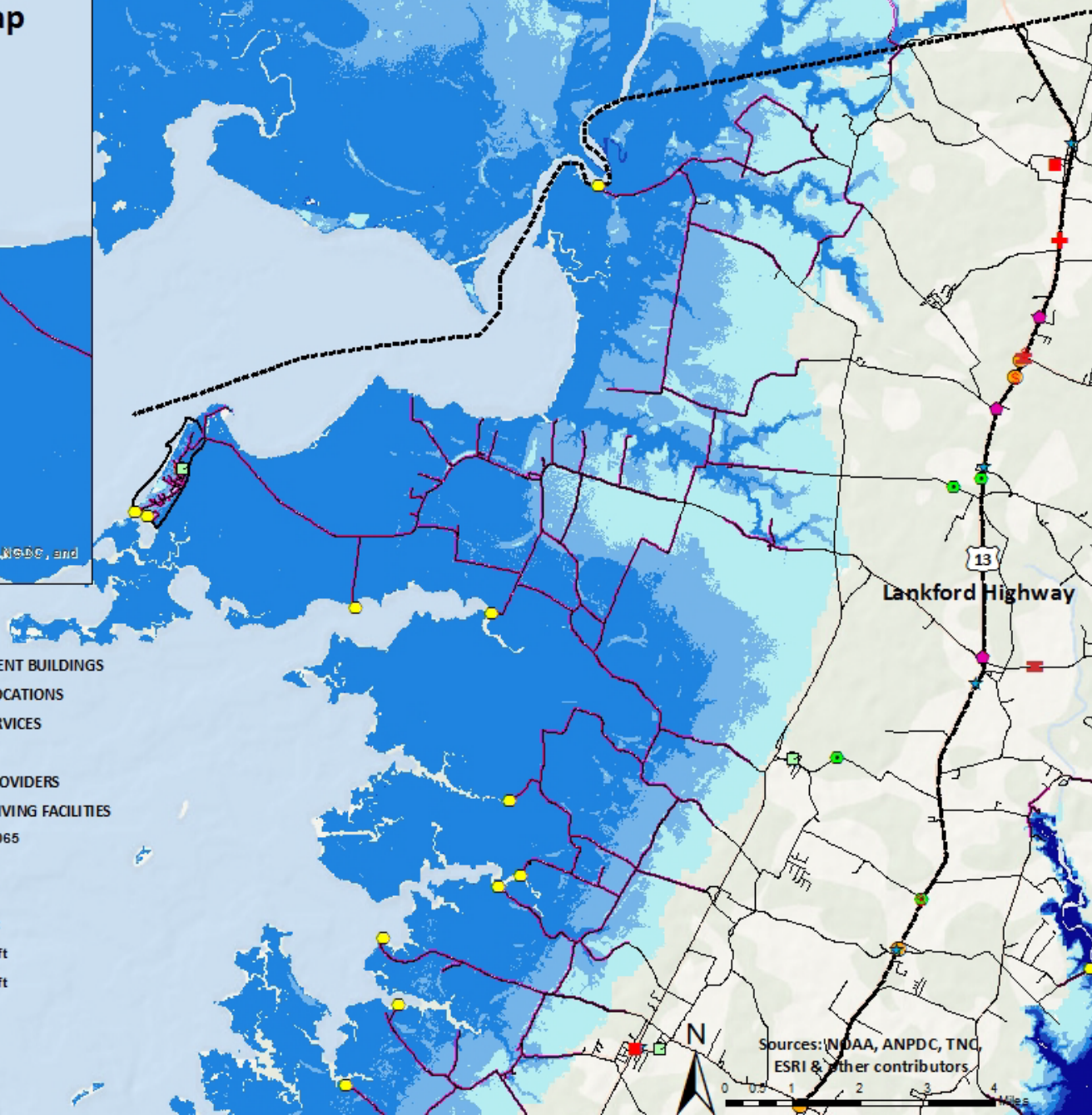
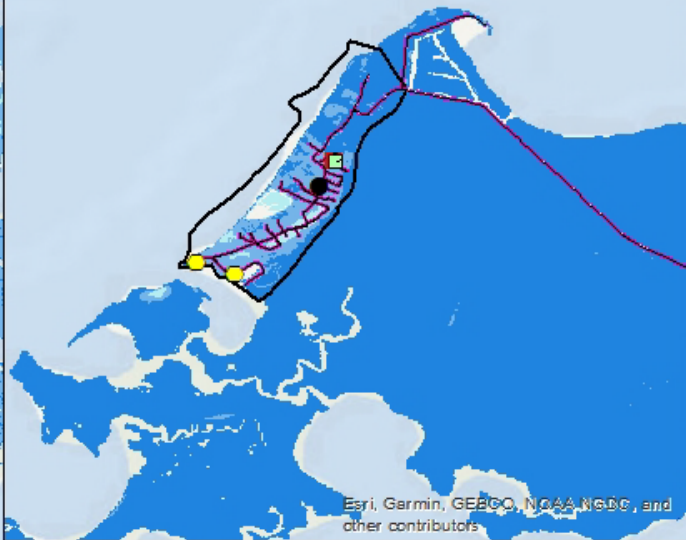
HIGHEST HIGH TIDE 2065



Sources: NOAA, ANPDC, TNC, ESRI & other contributors



Saxis Critical Infrastructure Map 2065 Storm Surge Conditions



LEGEND

ROADS INUNDATED WITH:

- <1ft FLOODING
- 1ft FLOODING
- 2ft FLOODING
- 3ft FLOODING
- 4ft FLOODING
- 5ft FLOODING
- 6ft FLOODING

- EVACUATION ROUTE
- TOWN BOUNDARY SAXIS

- FIRE STATIONS
- \$ BANKS & ATMs
- SCHOOLS
- COMMUNITIES AT-RISK OF LOSING ACCESS
- PUBLIC WATER ACCESS
- ▲ WASTEWATER TREATMENT FACILITIES
- + EMERGENCY CENTERS

- GOVERNMENT BUILDINGS
- TRANSIT LOCATIONS
- ★ POSTAL SERVICES
- GROCERY
- ◆ ENERGY PROVIDERS
- ♣ ASSISTED LIVING FACILITIES

STORM SURGE 2065

- 0.0 - 4.0 ft
- 4.1 - 8.0 ft
- 8.1 - 10.0 ft
- 10.1 - 16.0 ft
- 16.1 - 22.0 ft

Sources: NOAA, ANPDC, TNC, ESRI & other contributors



INSTITUTE for
ENGAGEMENT & NEGOTIATION
Shaping Our World Together



WILLIAM & MARY
LAW SCHOOL
VIRGINIA COASTAL
POLICY CENTER



OLD DOMINION UNIVERSITY
Resilience Collaborative

For more information visit
<https://raft.ien.virginia.edu/>