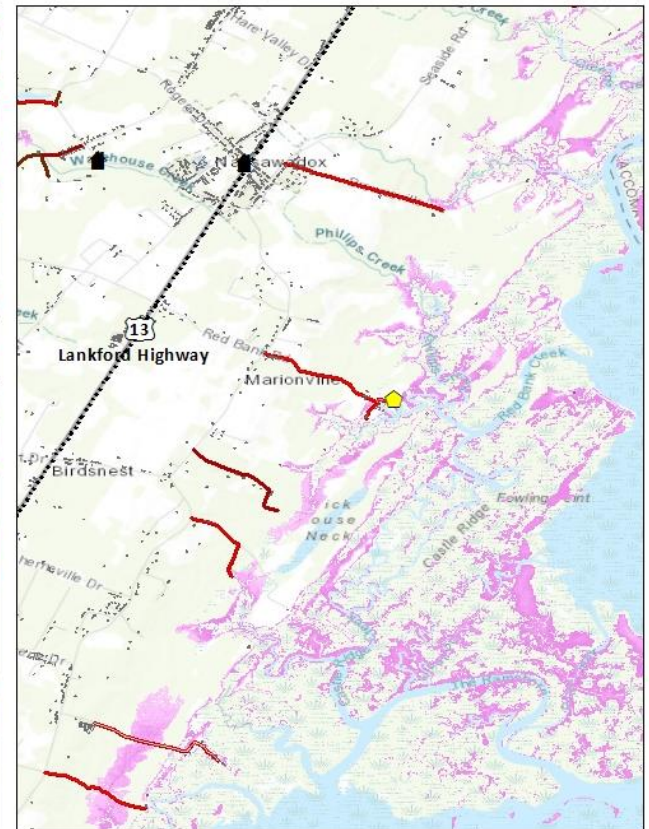
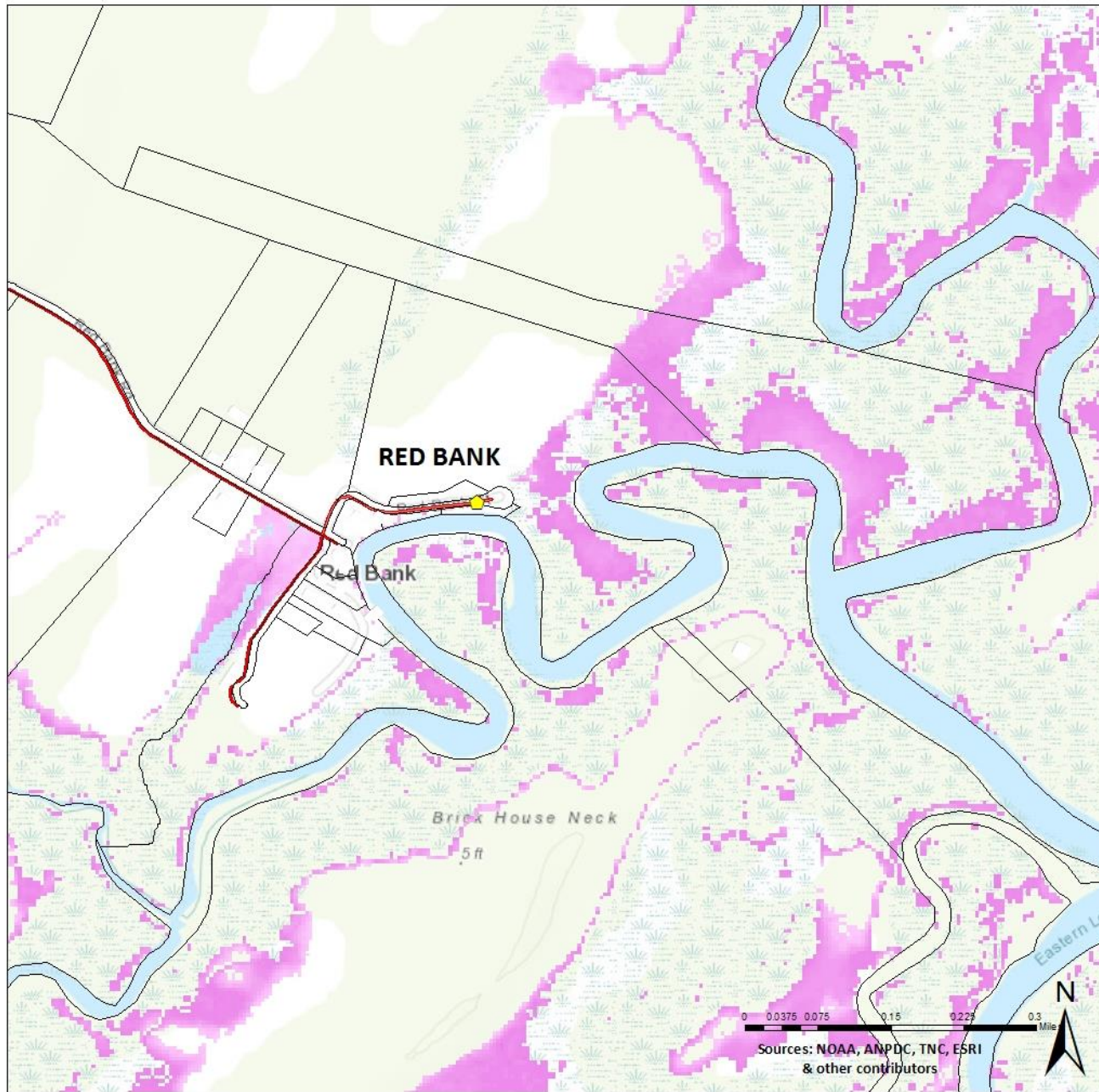
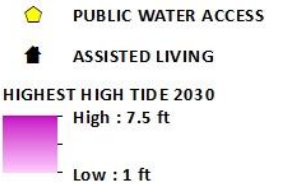
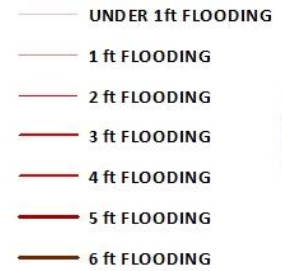


Red Bank Critical Infrastructure Map- 2030 High Tide Conditions



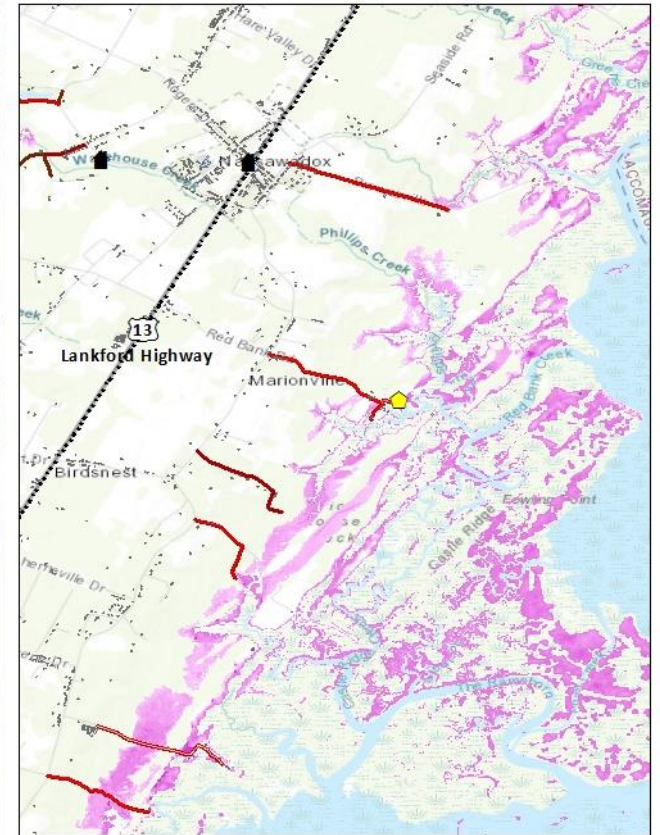
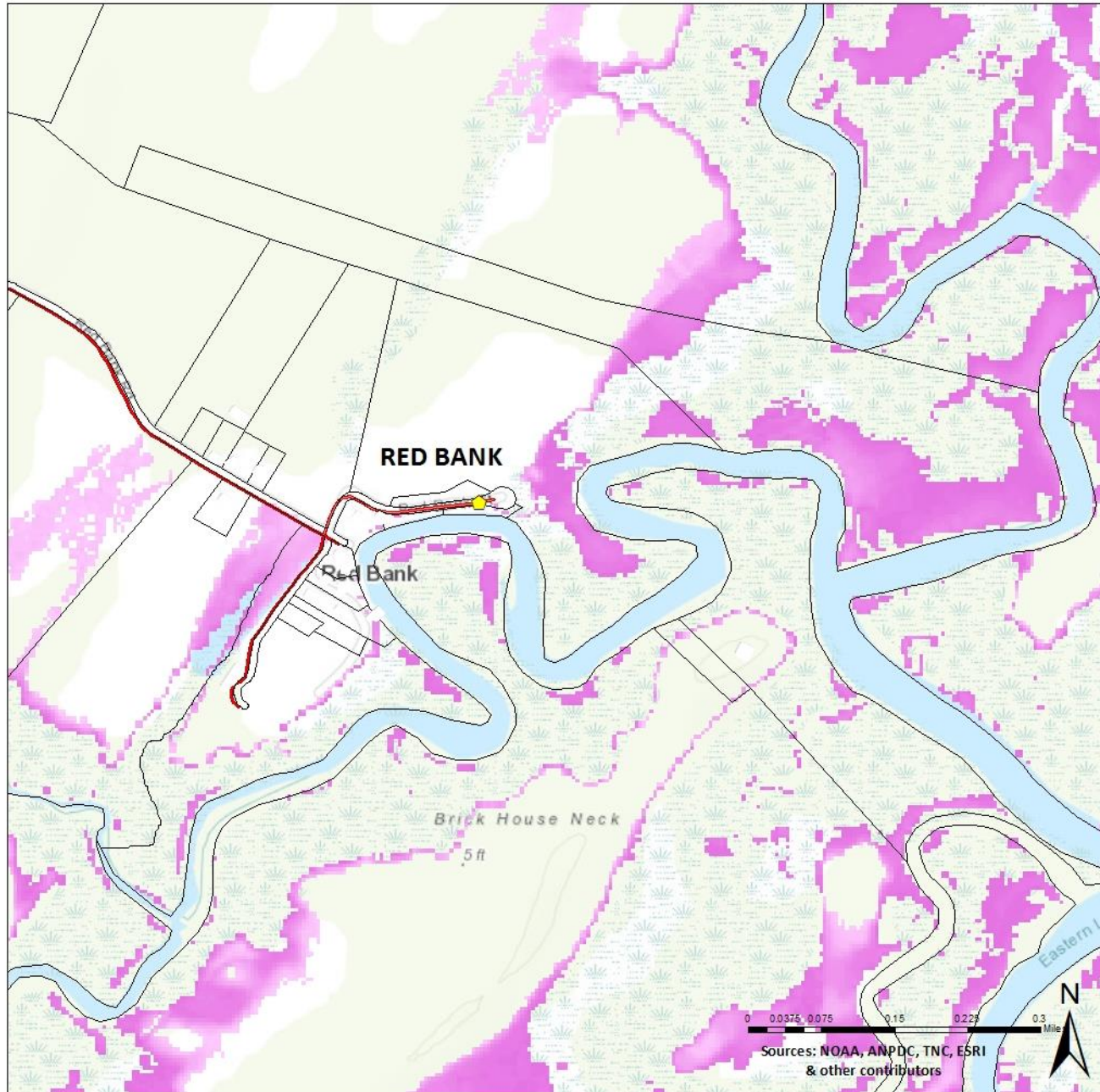
LEGEND

ROADS SUBMERGED WITH:



* The data/projections used are for an extreme SLR scenario. The Storm Surge data layer is not yet available for 2030. The inundation represented is incomplete.

Red Bank Critical Infrastructure Map- 2040 High Tide Conditions



LEGEND

ROADS SUBMERGED WITH:

- UNDER 1ft FLOODING
- 1 ft FLOODING
- 2 ft FLOODING
- 3 ft FLOODING
- 4 ft FLOODING
- 5 ft FLOODING
- 6 ft FLOODING

Public Water Access (Yellow Diamond)

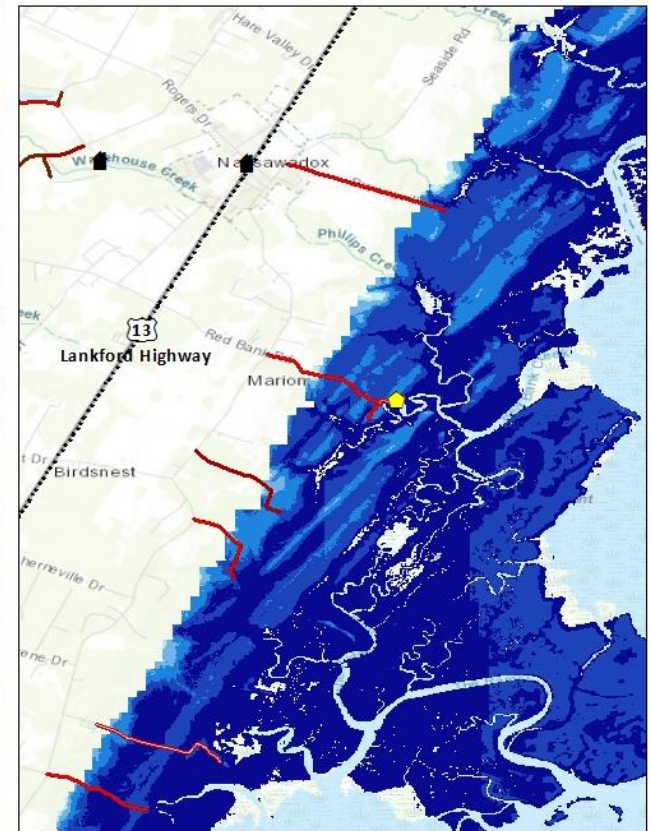
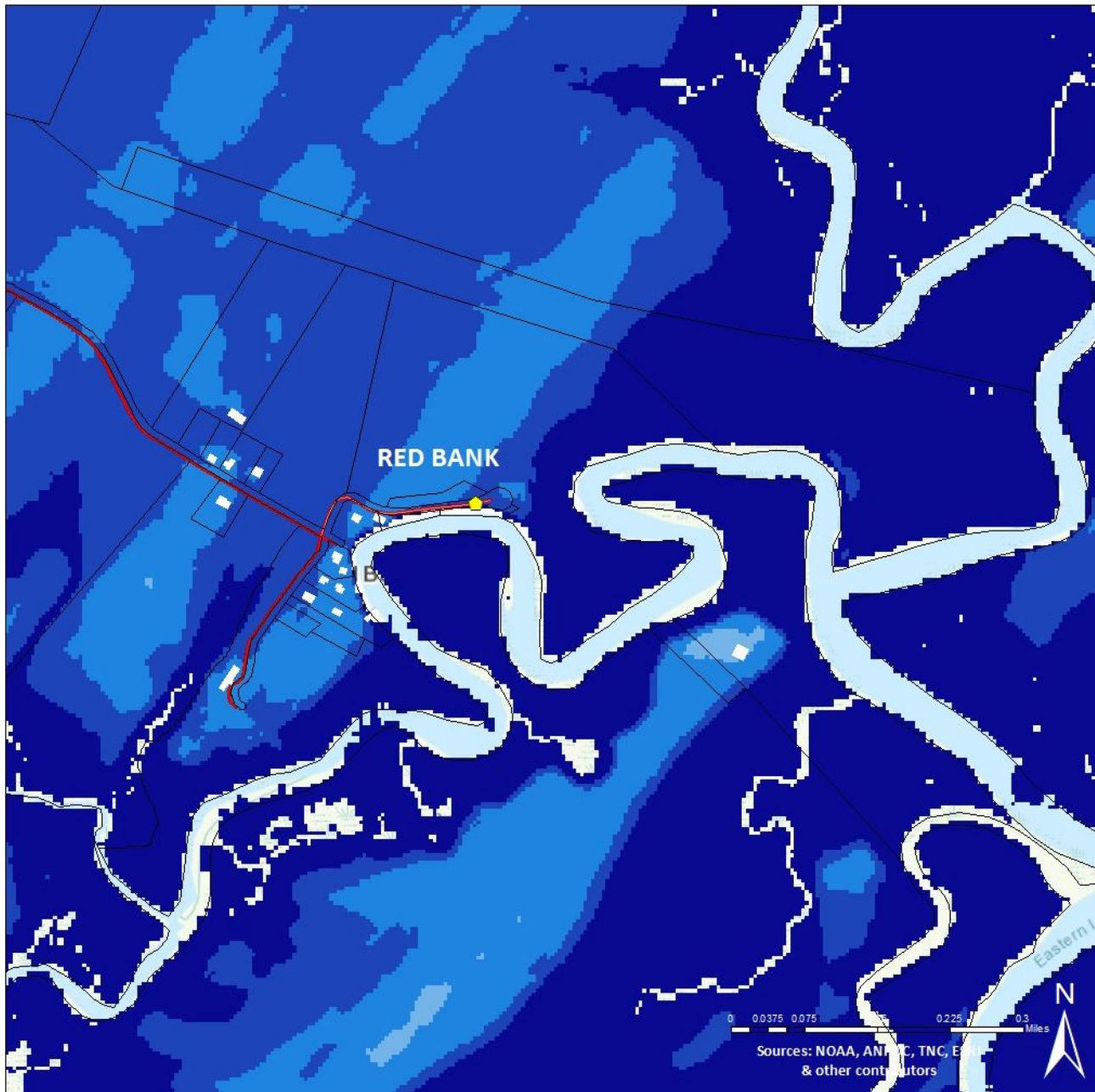
Assisted Living (House Icon)

HIGHEST HIGH TIDE 2040

High : 10 ft
Low : 1 ft

*The data/projections used are for an extreme SLR scenario. The Storm Surge data layer is not yet available for 2030. The inundation represented is incomplete.

Red Bank Critical Infrastructure Map- 2040 Storm Surge Conditions



LEGEND

ROADS SUBMERGED WITH:

- UNDER 1ft FLOODING
- 1 ft FLOODING
- 2 ft FLOODING
- 3 ft FLOODING
- 4 ft FLOODING
- 5 ft FLOODING
- 6 ft FLOODING

◆ PUBLIC WATER ACCESS

STORM SURGE 2040

- 1.0 - 4.0 ft
- 4.0 - 8.0 ft
- 8.0 - 16.0 ft
- 16.0 - 22.0 ft

🏠 ASSISTED LIVING

*The data/projections used are for an extreme SLR scenario. The Storm Surge data layer is not yet available for 2030. The inundation represented is incomplete.