

# Resiliency in Comprehensive Plans

Brian Swets, AICP

# Agenda

- Goals for resiliency
- What is resiliency?
- Where are you now?
- The role of leadership
- Resiliency examples
- Next steps

# Goals



# Goals

## PLAN



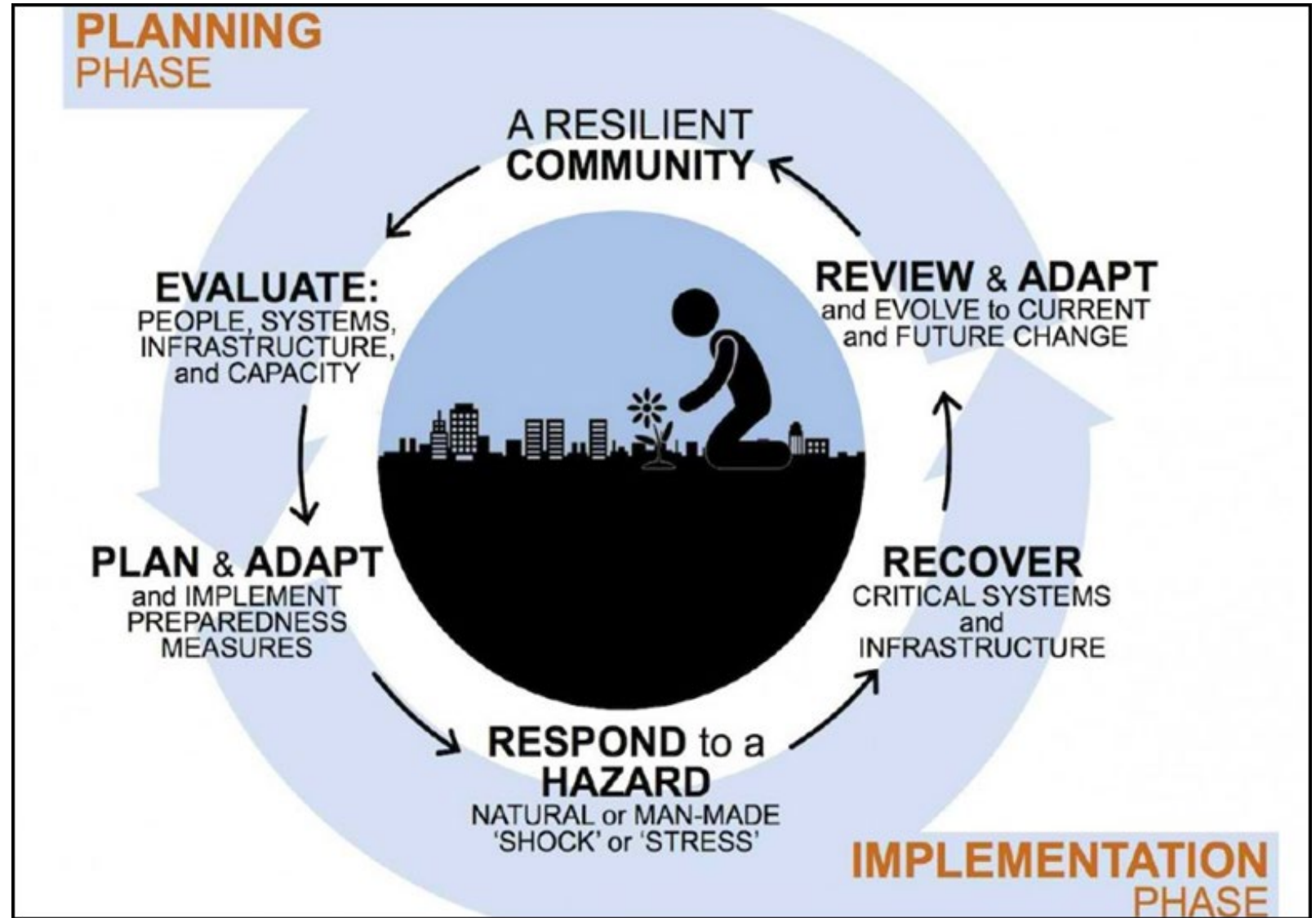
## ACT



# Goals



# Goals



What is  
resiliency?



# What is resiliency?





What is  
resiliency?



What is  
resiliency?



What is  
resiliency?





Where  
are you  
now?



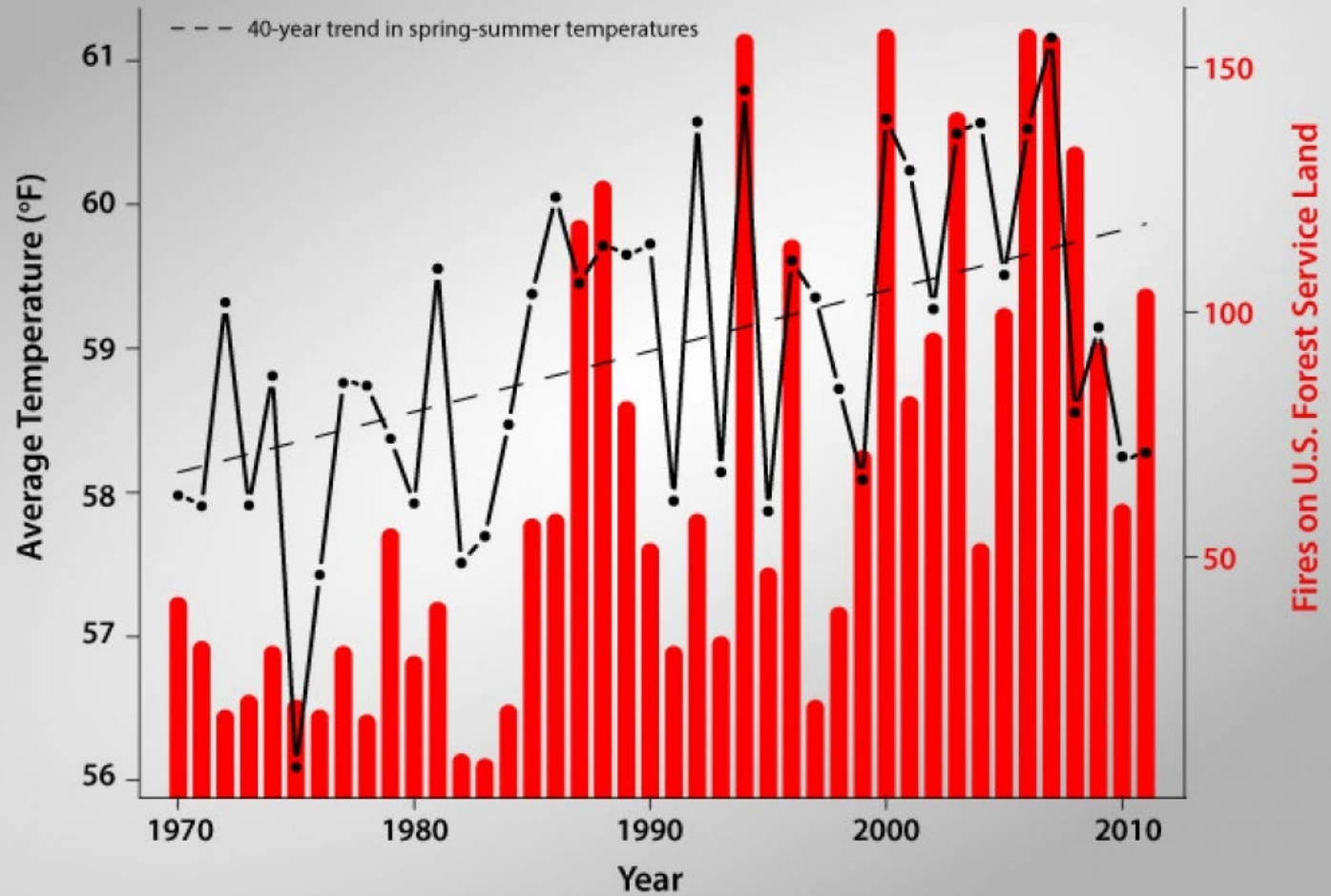


Where  
are you  
now?

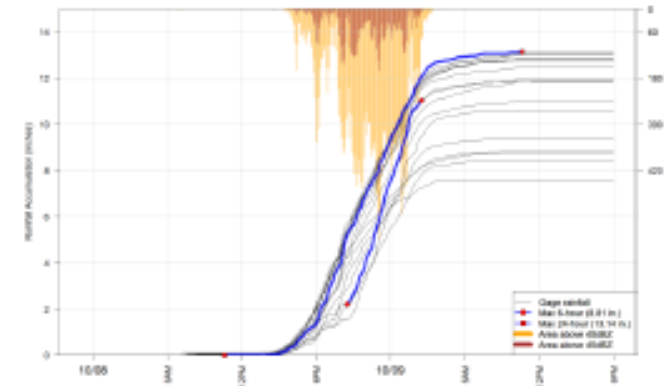


Where  
are you  
now?

## Hotter Years Typically Have More Large Fires



Where  
are you  
now?



## Analysis of Historical and Future Heavy Precipitation

City of Virginia Beach, Virginia  
CIP 7-030, PWON-15-0014, Work Order 9A

Final Report

Date: March 26, 2018

Submitted to: City of Virginia Beach  
Department of Public Works



<https://www.vbgov.com/government/departments/public-works/comp-sea-level-rise/Documents/anaylsis-hist-and-future-hvy-precip-4-2-18.pdf>

# The role of leadership

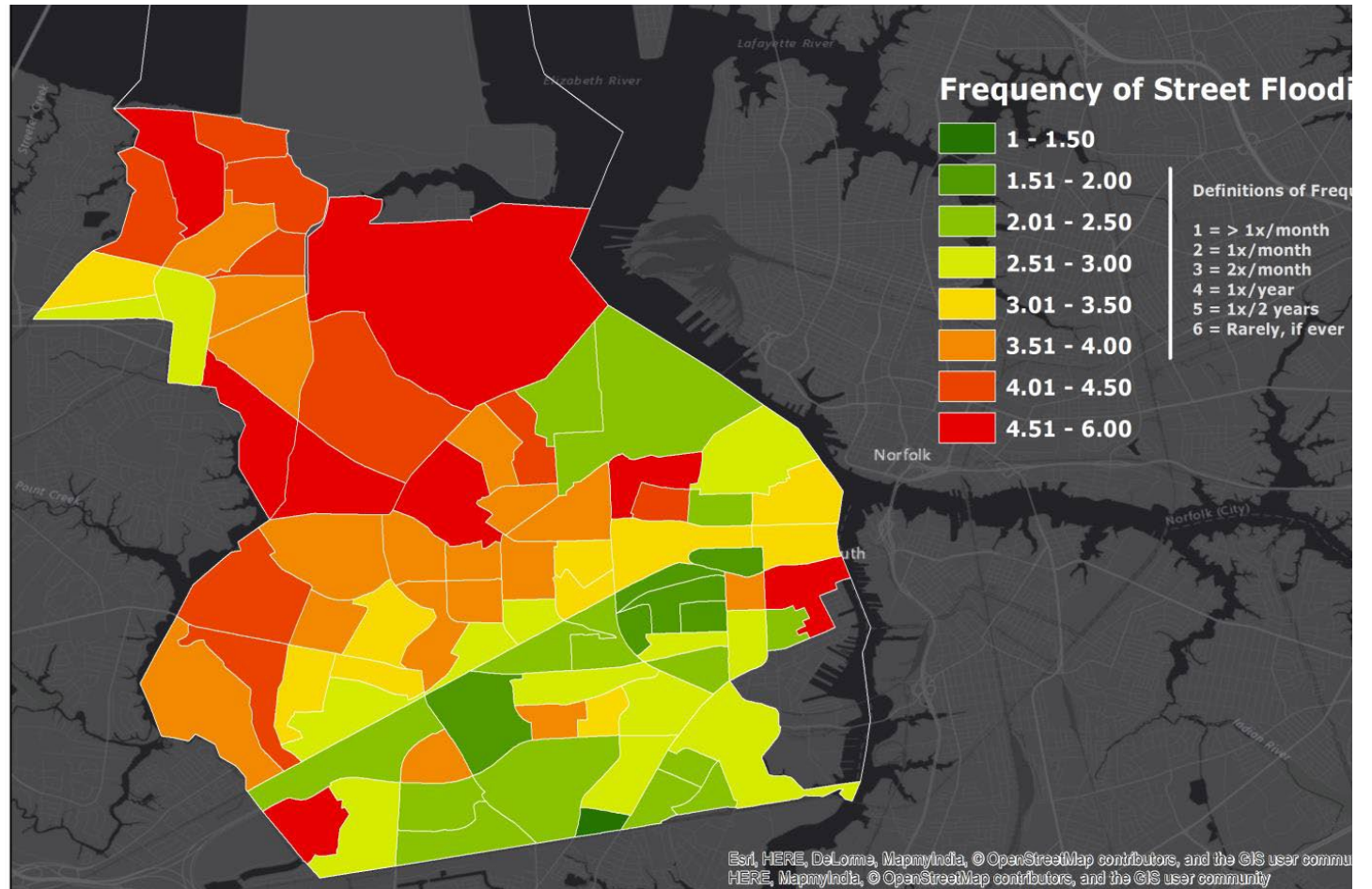




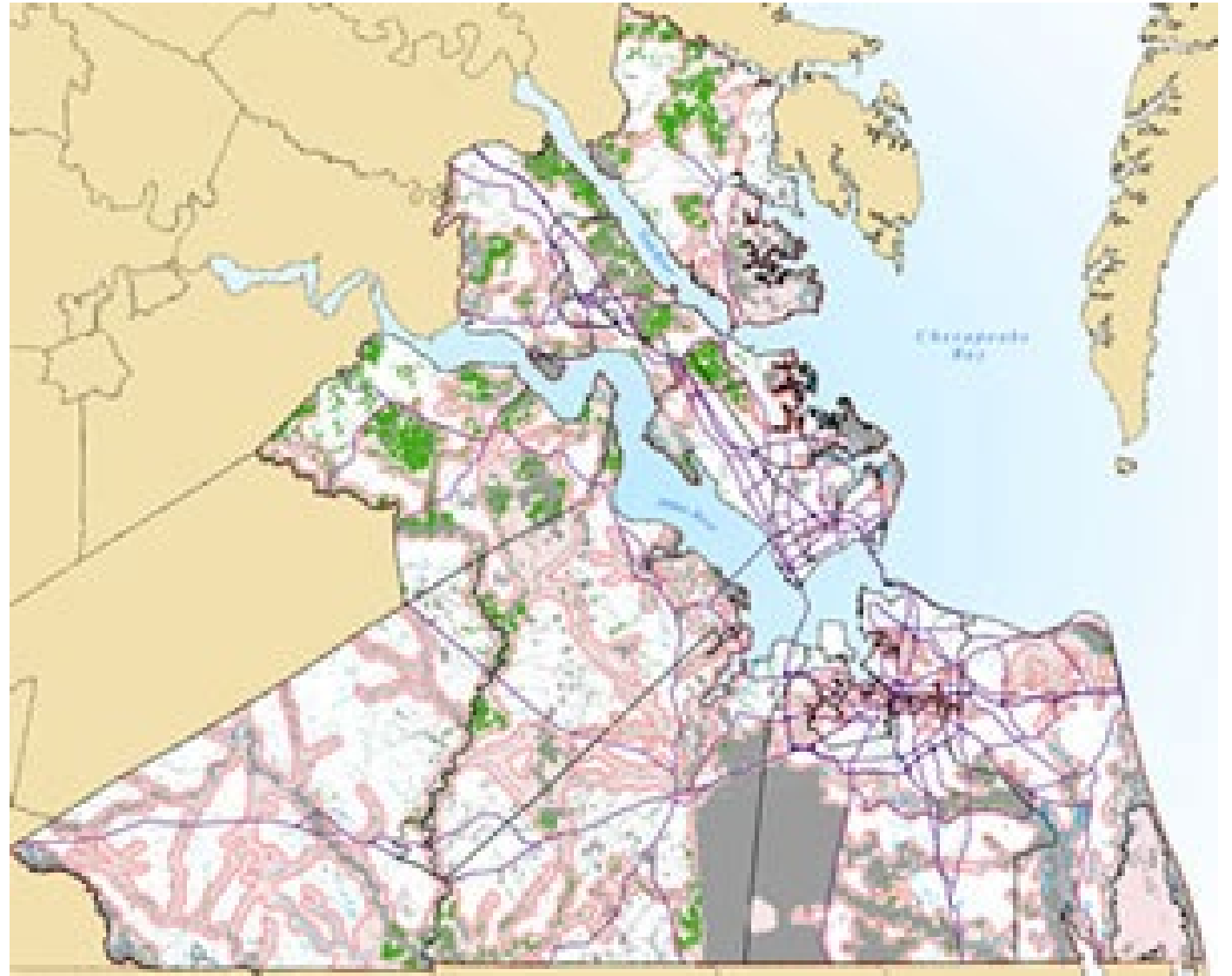
# The role of leadership

# Examples

# Examples: Environment



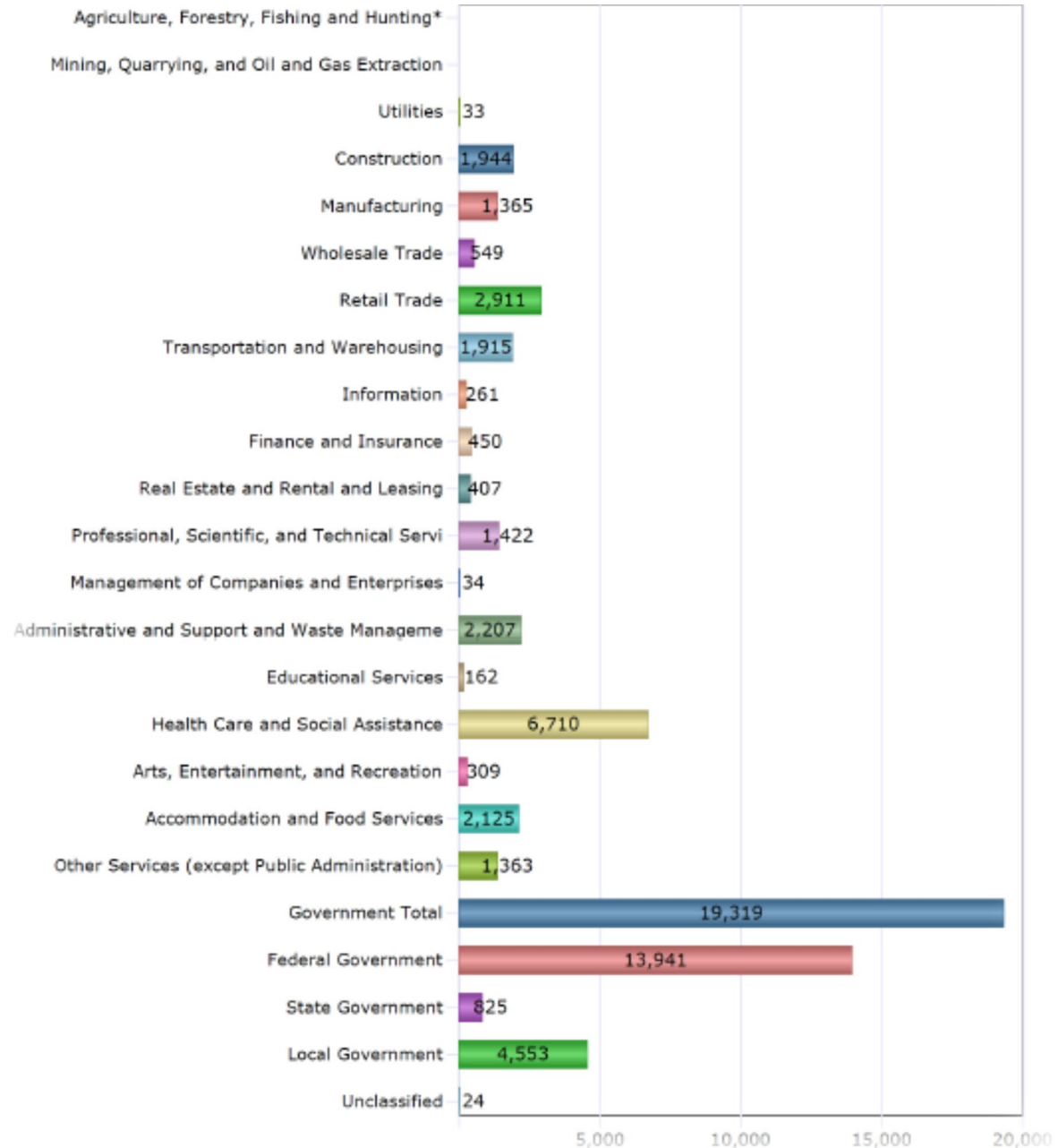
# Examples: Environment





# Examples: Economy

## Employment By Industry



# Examples: Economy

# Examples: Housing



# Examples: Housing





# Examples: Infrastructure



# Examples: Infrastructure



## G WATER FEATURE



Water themed play area for families to enjoy in the summer months.

## H PLANTED "GREEN" STEPS



Planted steps provide a unique area for park patrons to gather while allowing for infiltration of stormwater which reduces runoff volume.

## A PERMEABLE PEDESTRIAN WALKWAY



Pedestrian-only walkway provides connectivity to the park from surrounding streets and shops. Permeable pavers reduce surface runoff and come in a variety of styles and colors.

## B BIORETENTION AREAS



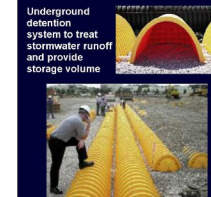
Bioretention areas capture and treat stormwater runoff.

## C EDUCATIONAL SIGNAGE



Educational material, including signage and pavement markings, put in place to foster curiosity and engagement around stormwater management and describe the park's unique features.

## D UNDERGROUND DETENTION SYSTEM



Underground detention system to treat stormwater runoff and provide storage volume.

## E COVERED PAVILION & RAINBARREL



Covered area with accompanying rain barrels to demonstrate ways to capture roof runoff and water re-use.

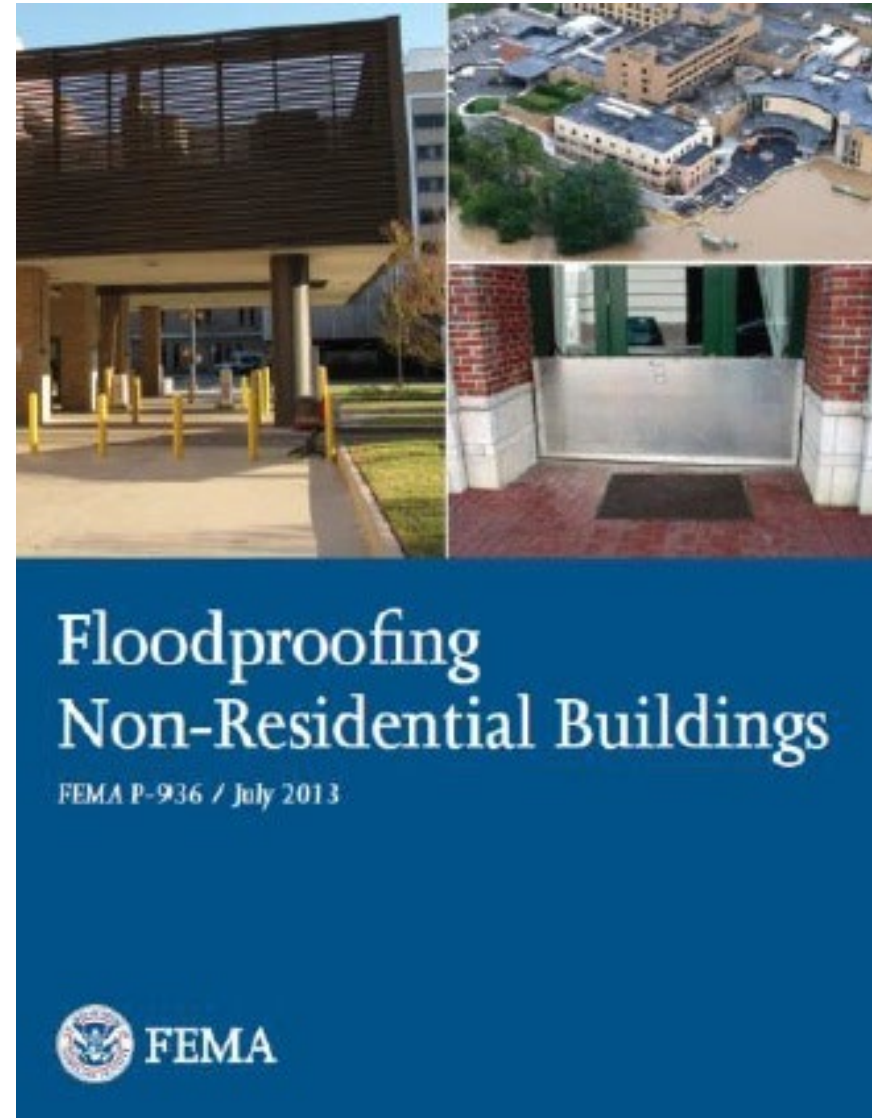
## F RECESSED PERFORMANCE AREA



An open-air performance area provides a space for the arts. Designed to flood during storm events and provide storage volume to reduce upstream flooding.

## City of Portsmouth Downtown Stormwater Park: OPTION 2

# Examples: Infrastructure



# Examples: Equity



# Examples: Equity



# Examples: Equity





# Examples: Equity





# Examples: Equity



# Examples: Equity





Resiliency

Questions?

