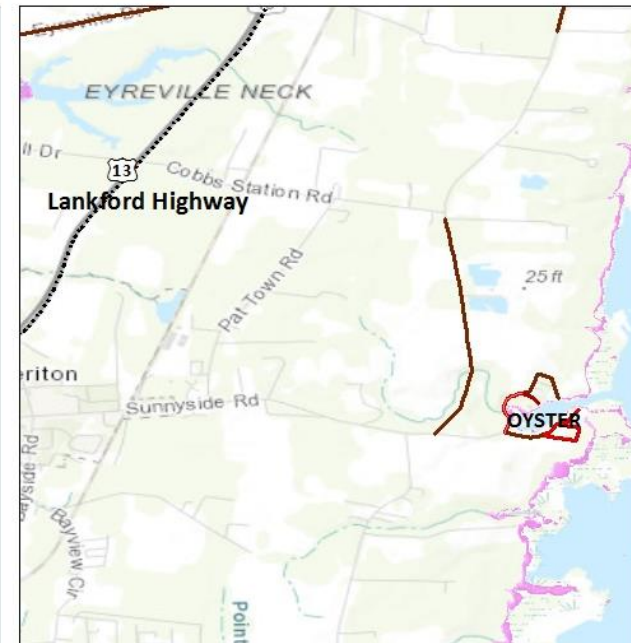
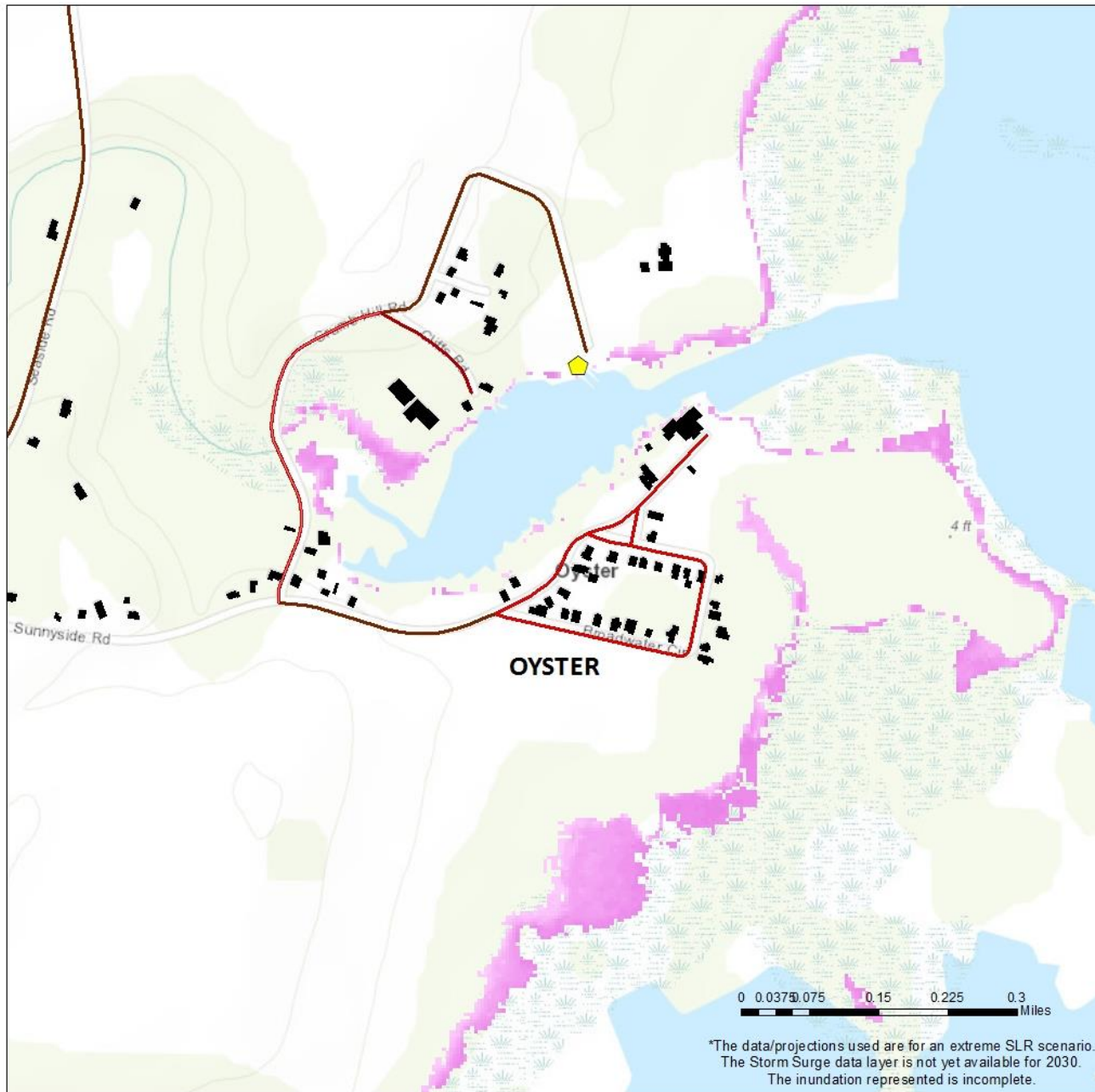


# Oyster Critical Infrastructure Map- 2030 High Tide Conditions



## LEGEND

### ROADS SUBMERGED WITH:

- UNDER 1 ft FLOODING
- 1 ft FLOODING
- 2 ft FLOODING
- 3 ft FLOODING
- 4 ft FLOODING
- 5 ft FLOODING
- 6 ft FLOODING



ASSISTED LIVING



PUBLIC WATER ACCESS

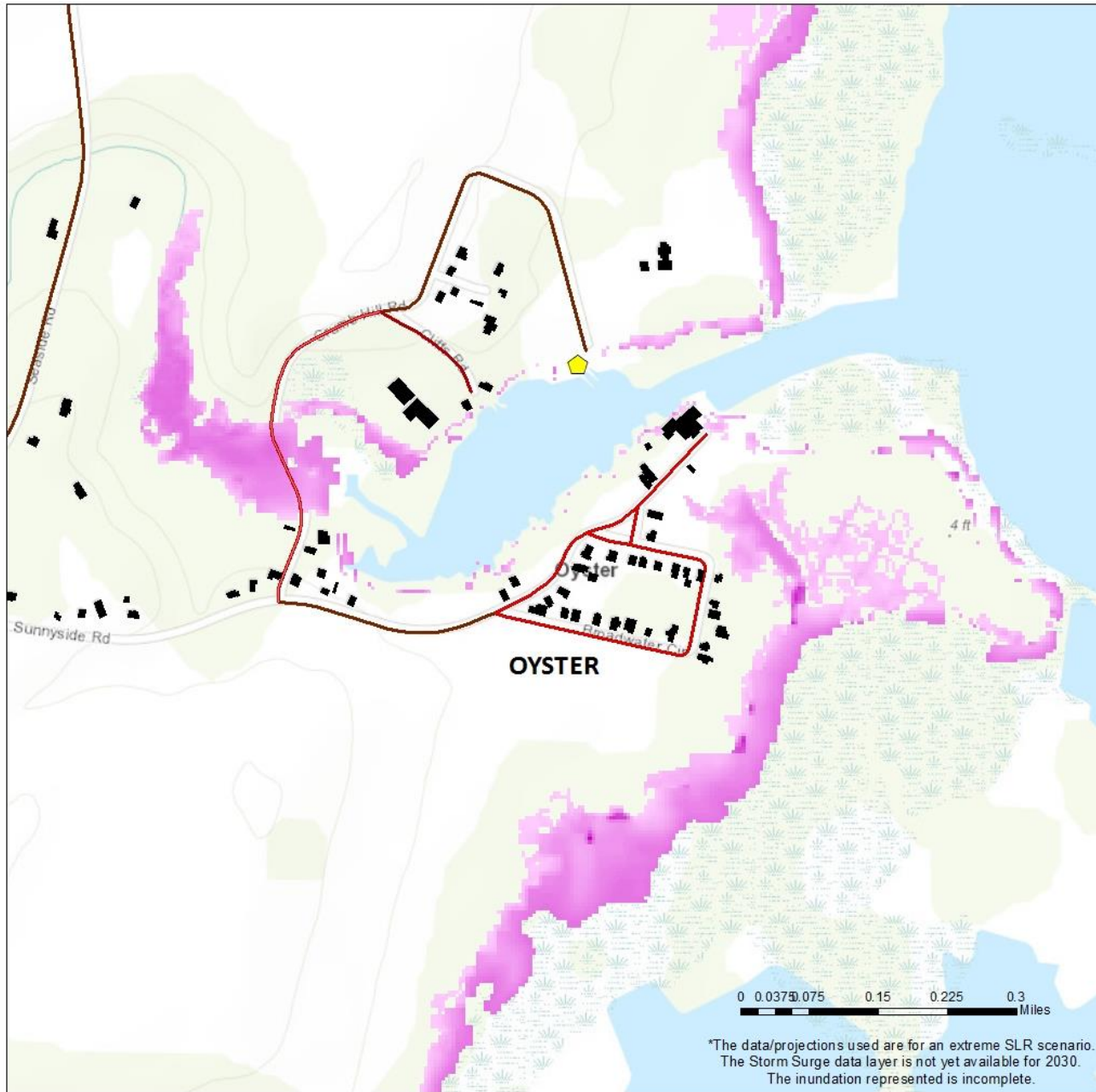
### HIGHEST HIGH TIDE 2030



Sources: NOAA, ANPDC, TNC, ESRI & other contributors



# Oyster Critical Infrastructure Map- 2040 High Tide Conditions



## LEGEND

### ROADS SUBMERGED WITH:

- UNDER 1 ft FLOODING
- 1 ft FLOODING
- 2 ft FLOODING
- 3 ft FLOODING
- 4 ft FLOODING
- 5 ft FLOODING
- 6 ft FLOODING

ASSISTED LIVING

PUBLIC WATER ACCESS

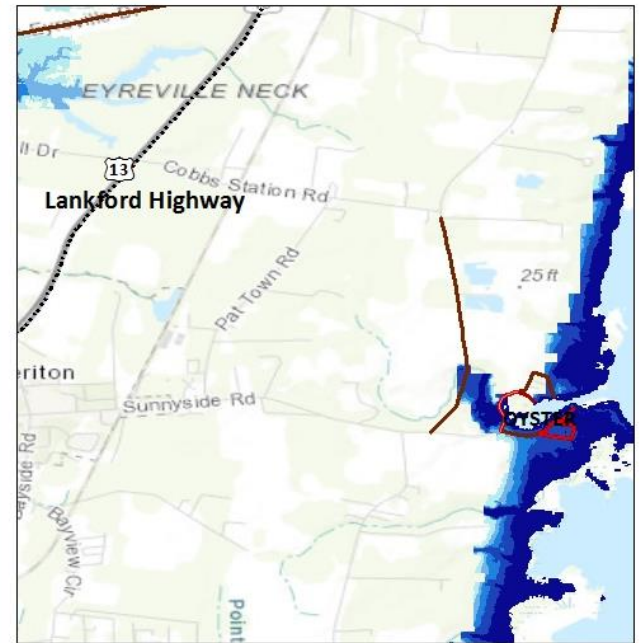
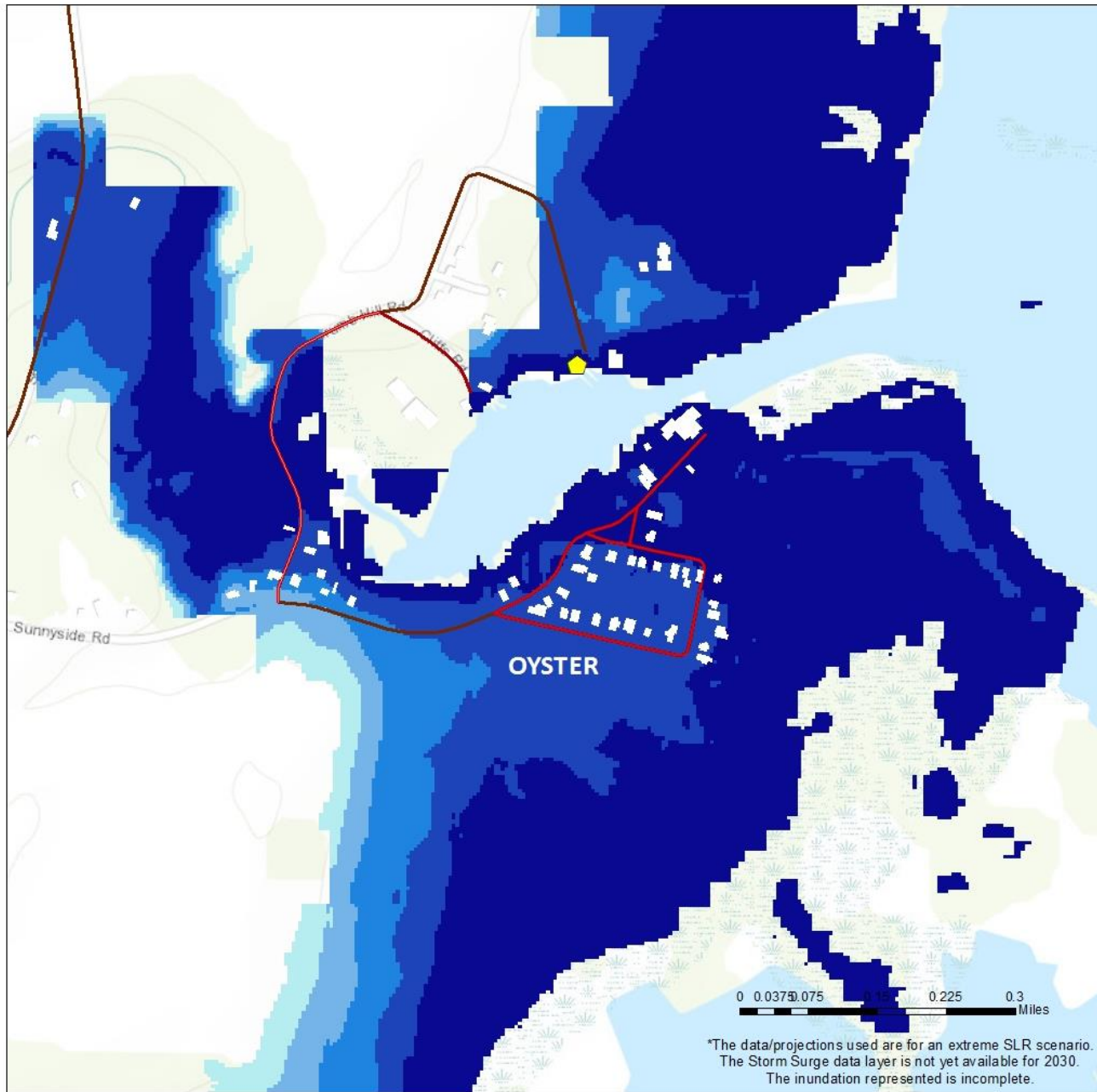
### HIGHEST HIGH TIDE 2040

- High : 10 ft
- Low : 1 ft

Sources: NOAA, ANPDC, TNC, ESRI & other contributors

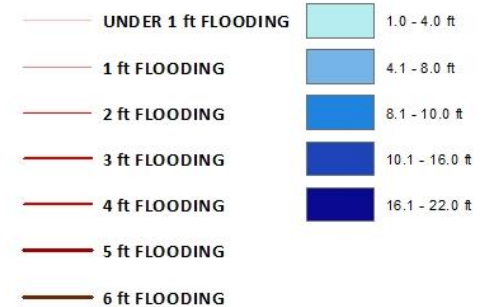


# Oyster Critical Infrastructure Map- 2040 Storm Surge Conditions



## LEGEND

### ROADS SUBMERGED WITH:



- ASSISTED LIVING
- PUBLIC WATER ACCESS

### STORM SURGE 2040

Sources: NOAA, ANPDC, TNC, ESRI & other contributors

