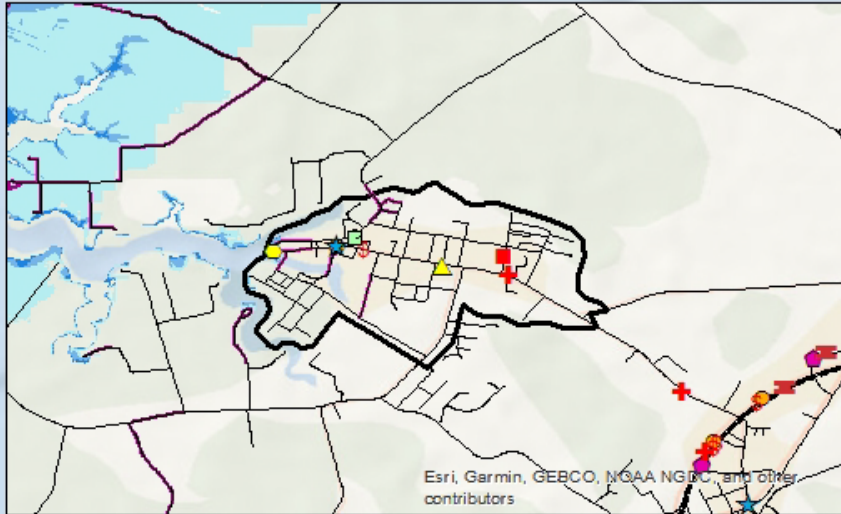


Onancock Critical Infrastructure Map

2040 Storm Surge Conditions



LEGEND

ROADS INUNDAED WITH:

- <1ft FLOODING
- 1ft FLOODING
- 2ft FLOODING
- 3ft FLOODING
- 4ft FLOODING
- 5ft FLOODING
- 6ft FLOODING

--- EVACUATION ROUTE

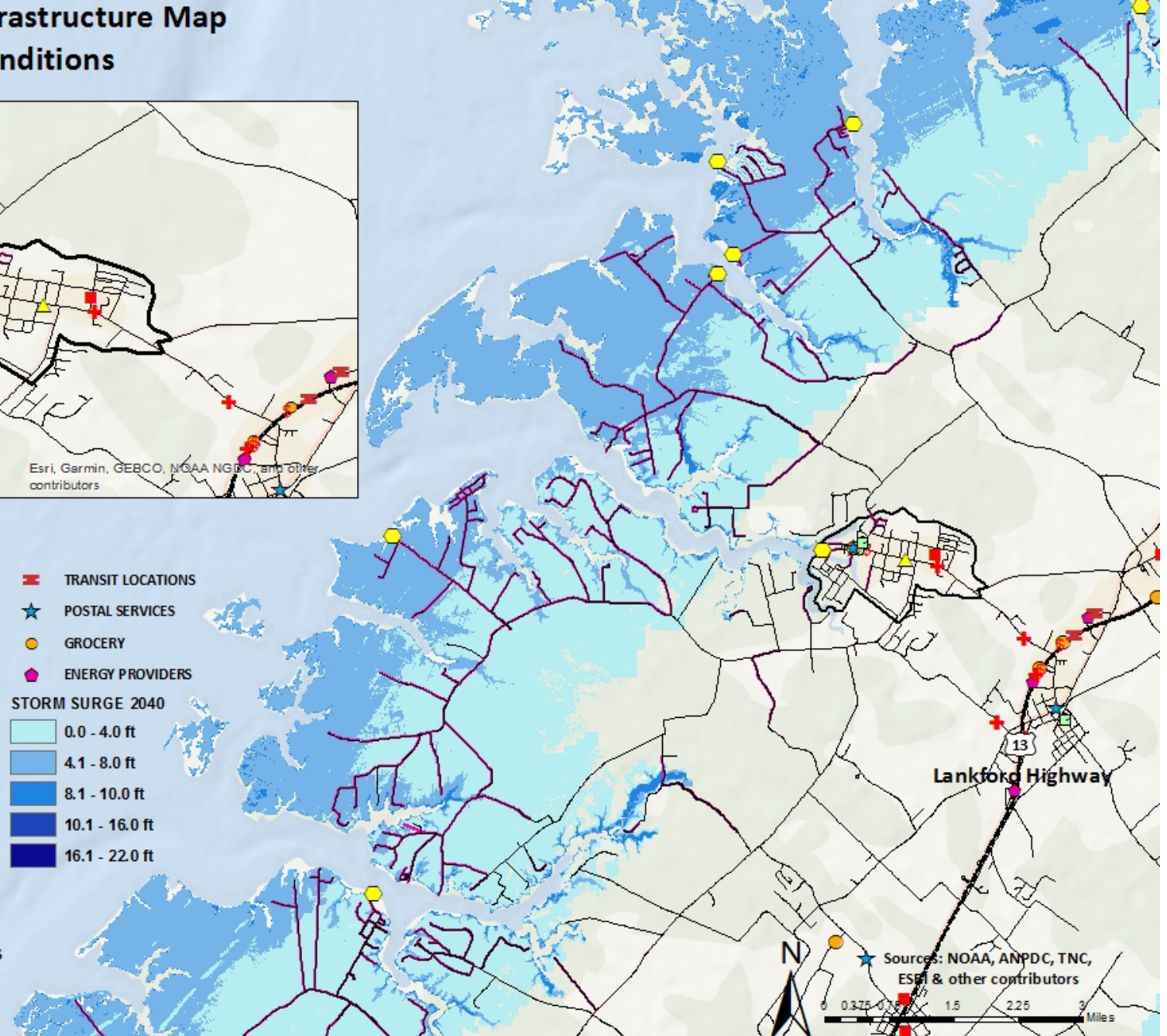
□ TOWN BOUNDARY ONANCOCK

- FIRE STATIONS
- ⌘ BANKS & ATMs
- PUBLIC WATER ACCESS
- ▲ WASTEWATER TREATMENT FACILITIES
- ✚ EMERGENCY CENTERS
- GOVERNMENT BUILDINGS

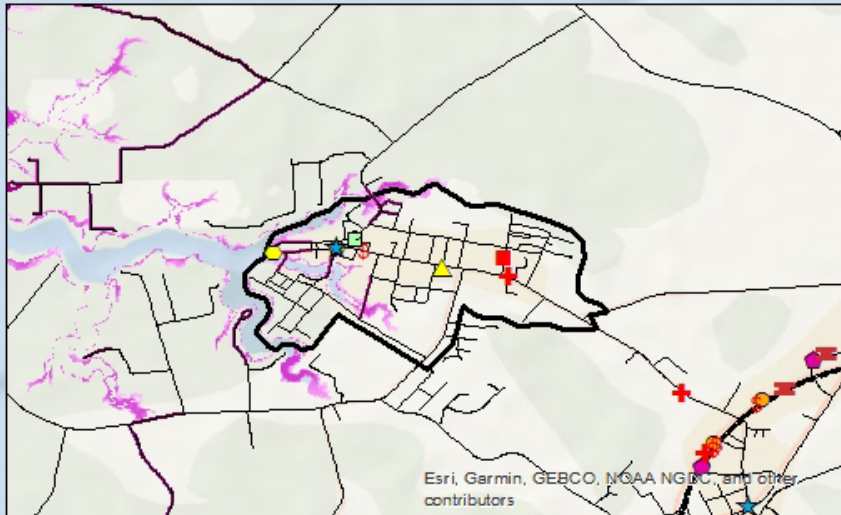
- ✚ TRANSIT LOCATIONS
- ★ POSTAL SERVICES
- GROCERY
- ENERGY PROVIDERS

STORM SURGE 2040

- 0.0 - 4.0 ft
- 4.1 - 8.0 ft
- 8.1 - 10.0 ft
- 10.1 - 16.0 ft
- 16.1 - 22.0 ft







Onancock Critical Infrastructure Map 2065 Highest High Tide




LEGEND

ROADS INUNDATED WITH:


- <1 ft FLOODING
 — 1 ft FLOODING
 — 2 ft FLOODING
 — 3 ft FLOODING
 — 4 ft FLOODING
 — 5 ft FLOODING
 — 6 ft FLOODING

-  TRANSIT LOCATIONS
-  POSTAL SERVICES
-  GROCERY
-  ENERGY PROVIDERS

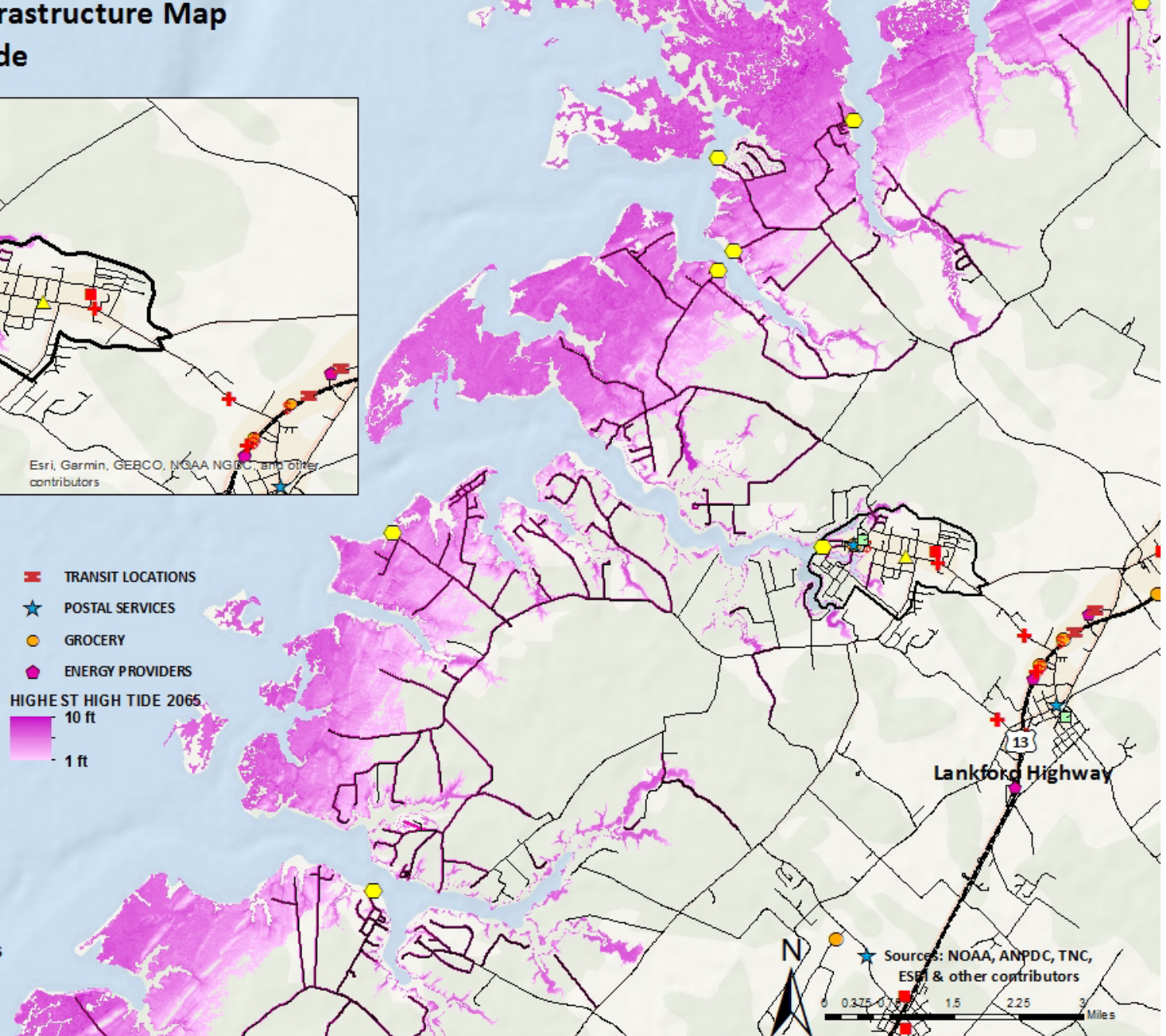
HIGHEST HIGH TIDE 2065

- 
- 10 ft
- 1 ft

- #### ----- EVACUATION ROUTE

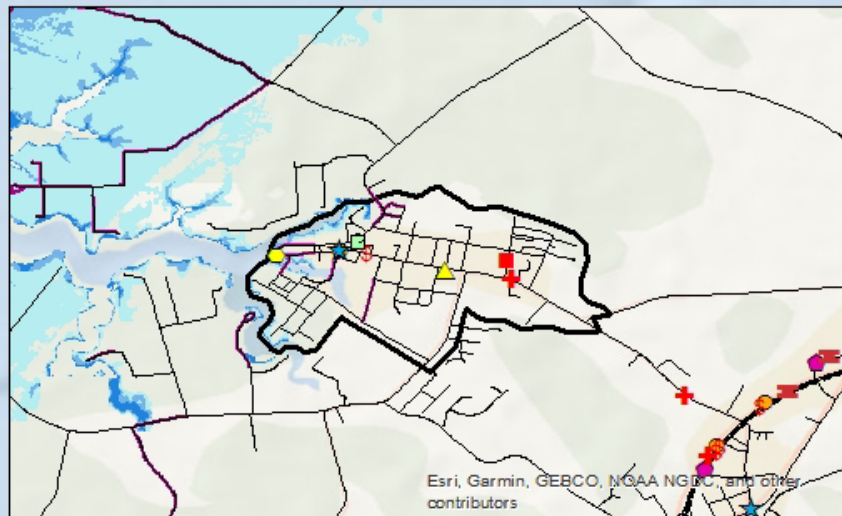
- 
- TOWN BOUNDARY ONANCOCK

-  FIRE STATIONS
-  BANKS & ATMs
-  PUBLIC WATER ACCESS
-  WASTEWATER TREATMENT FACILITIES
-  EMERGENCY CENTERS
-  GOVERNMENT BUILDINGS



Onancock Critical Infrastructure Map

2065 Storm Surge Conditions



LEGEND

ROADS INUNDATED WITH:

- <1 ft FLOODING
- 1 ft FLOODING
- 2 ft FLOODING
- 3 ft FLOODING
- 4 ft FLOODING
- 5 ft FLOODING
- 6 ft FLOODING

--- EVACUATION ROUTE

TOWN BOUNDARY ONANCOCK

- FIRE STATIONS
- \$ BANKS & ATMs
- PUBLIC WATER ACCESS
- ▲ WASTEWATER TREATMENT FACILITIES
- + EMERGENCY CENTERS
- GOVERNMENT BUILDINGS

- + TRANSIT LOCATIONS
- ★ POSTAL SERVICES
- GROCERY
- ◆ ENERGY PROVIDERS

STORM SURGE 2065

- 0.0 - 4.0 ft
- 4.1 - 8.0 ft
- 8.1 - 10.0 ft
- 10.1 - 16.0 ft
- 16.1 - 22.0 ft

