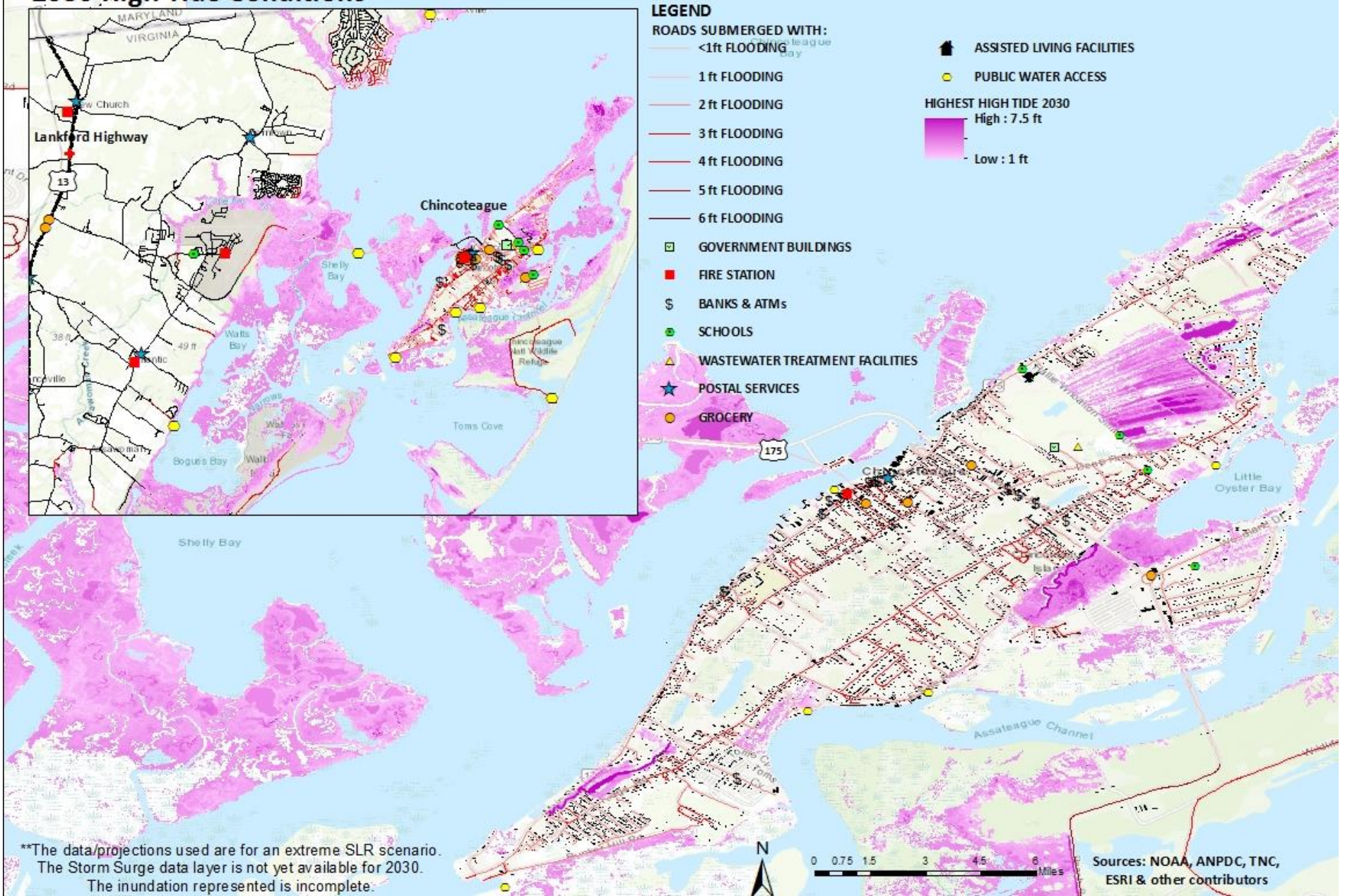


Chincoteague Critical Infrastructure Map

2030 High Tide Conditions

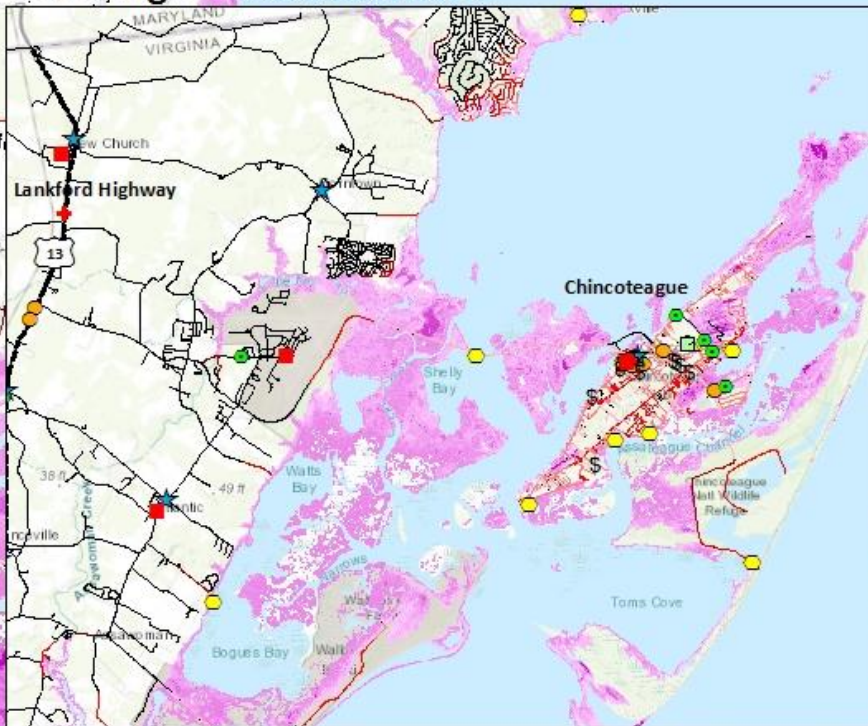


**The data/projections used are for an extreme SLR scenario. The Storm Surge data layer is not yet available for 2030. The inundation represented is incomplete.

0 0.75 1.5 3 4.5 6 Miles
 Sources: NOAA, ANPDC, TNC, ESRI & other contributors

Chincoteague Critical Infrastructure Map

2040 High Tide Conditions



LEGEND

ROADS SUBMERGED WITH:

- <1ft FLOODING
- 1 ft FLOODING
- 2 ft FLOODING
- 3 ft FLOODING
- 4 ft FLOODING
- 5 ft FLOODING
- 6 ft FLOODING

- ASSISTED LIVING FACILITIES
 - PUBLIC WATER ACCESS
- HIGHEST HIGH TIDE 2040**
- █ 10 ft
 - █ 1 ft

- GOVERNMENT BUILDINGS
- FIRE STATION
- BANKS & ATMs
- SCHOOLS
- WASTEWATER TREATMENT FACILITIES
- POSTAL SERVICES
- GROCERY

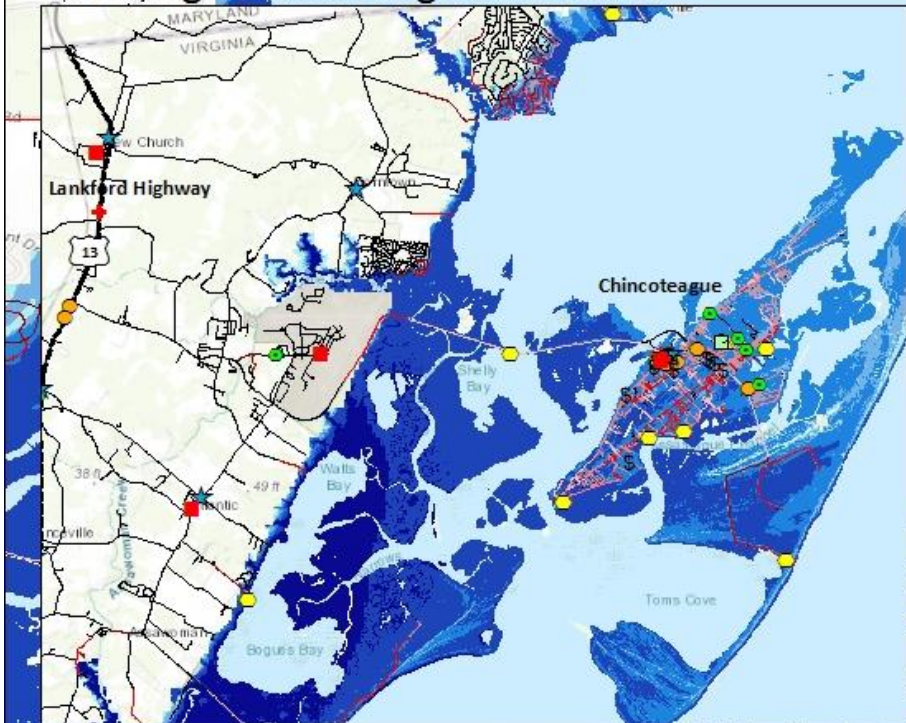


**The data/projections used are for an extreme SLR scenario. The Storm Surge data layer is not yet available for 2030. The inundation represented is incomplete.

Sources: NOAA, ANPDC, TNC, ESRI & other contributors

Chincoteague Critical Infrastructure Map

2040 High Storm Surge Conditions



LEGEND

ROADS SUBMERGED WITH:

- <1ft FLOODING
- 1 ft FLOODING
- 2 ft FLOODING
- 3 ft FLOODING
- 4 ft FLOODING
- 5 ft FLOODING
- 6 ft FLOODING
- GOVERNMENT BUILDINGS
- FIRE STATION
- \$ BANKS & ATMs
- SCHOOLS
- ▲ WASTEWATER TREATMENT FACILITIES
- ✉ POSTAL SERVICES
- GROCERY

- ♠ ASSISTED LIVING FACILITIES
- PUBLIC WATER ACCESS

STORM SURGE 2040

- 0.0 - 4.0 ft
- 4.1 - 8.0 ft
- 8.1 - 10.0 ft
- 10.1 - 16.0 ft
- 16.1 - 22.0 ft

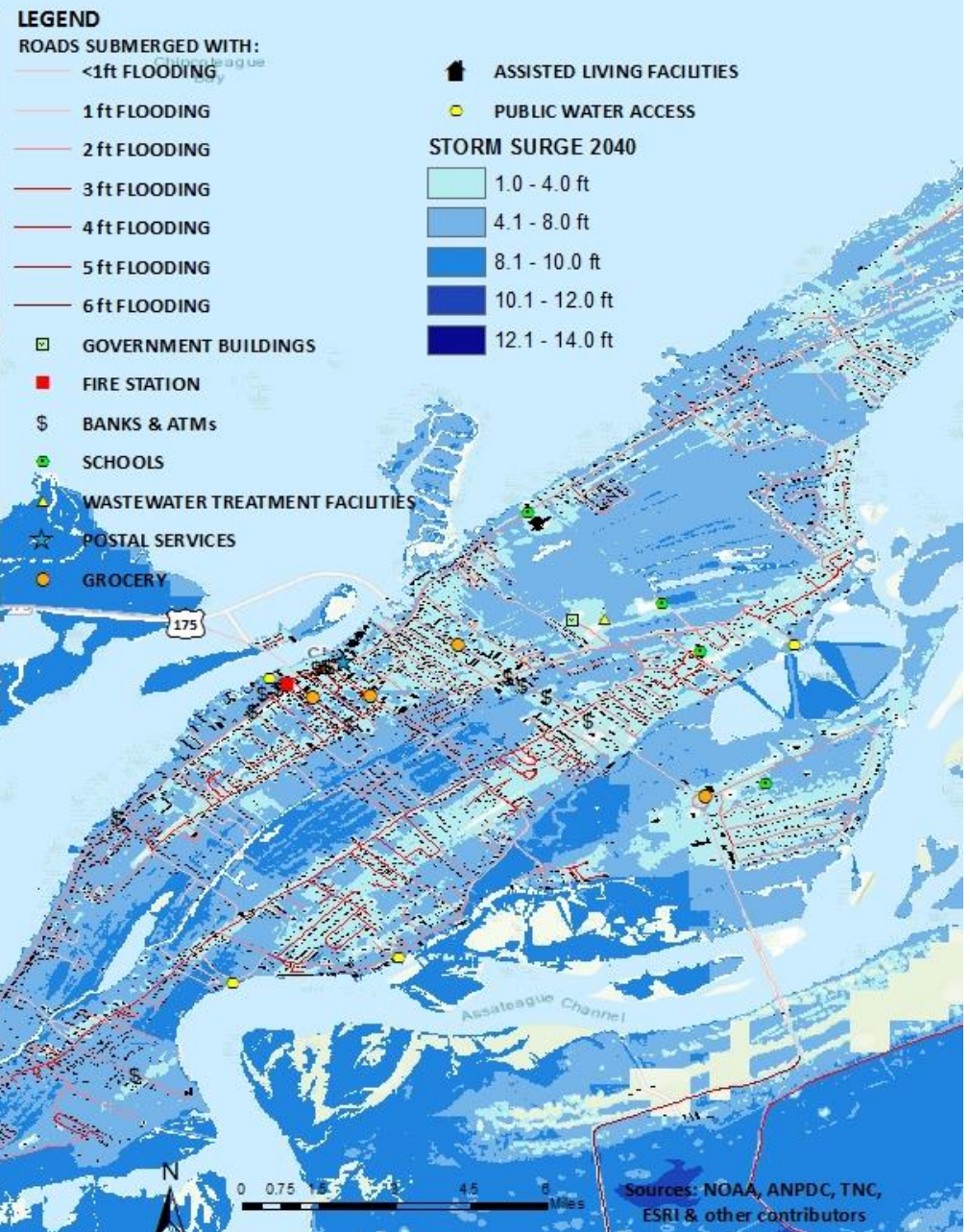
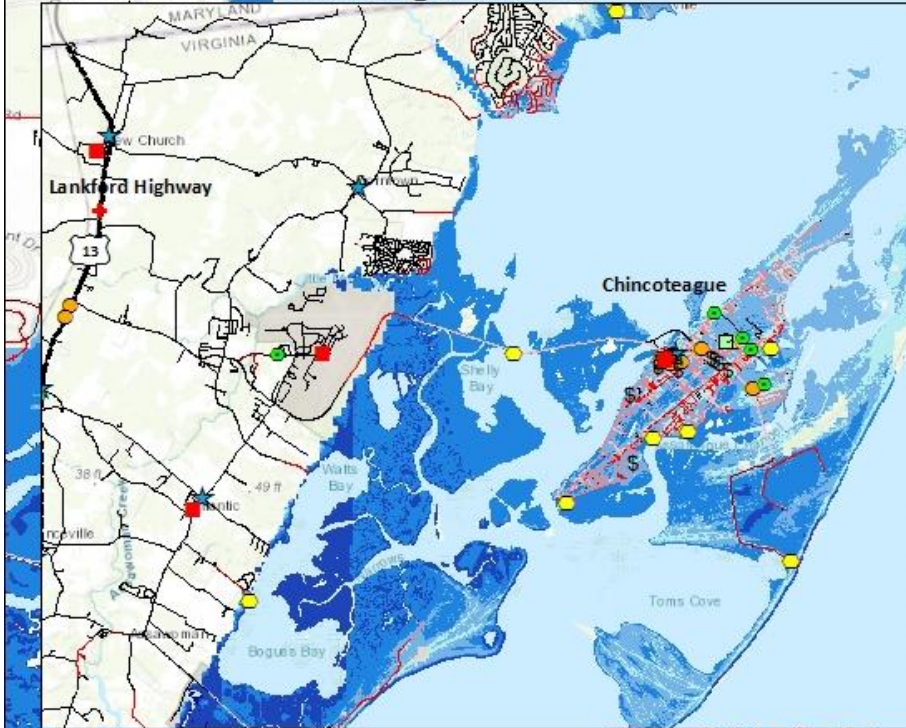


**The data projections used are for an extreme SLR scenario. The Storm Surge data layer is not yet available for 2030. The inundation represented is incomplete.

Sources: NOAA, ANPDC, TNC, ESRI & other contributors

Chincoteague Critical Infrastructure Map

2040 Low Storm Surge Conditions



LEGEND

ROADS SUBMERGED WITH:

- <1ft FLOODING
- 1 ft FLOODING
- 2 ft FLOODING
- 3 ft FLOODING
- 4 ft FLOODING
- 5 ft FLOODING
- 6 ft FLOODING
- GOVERNMENT BUILDINGS
- FIRE STATION
- \$ BANKS & ATMs
- SCHOOLS
- ▲ WASTEWATER TREATMENT FACILITIES
- ☆ POSTAL SERVICES
- GROCERY

■ ASSISTED LIVING FACILITIES
● PUBLIC WATER ACCESS

STORM SURGE 2040

- 1.0 - 4.0 ft
- 4.1 - 8.0 ft
- 8.1 - 10.0 ft
- 10.1 - 12.0 ft
- 12.1 - 14.0 ft

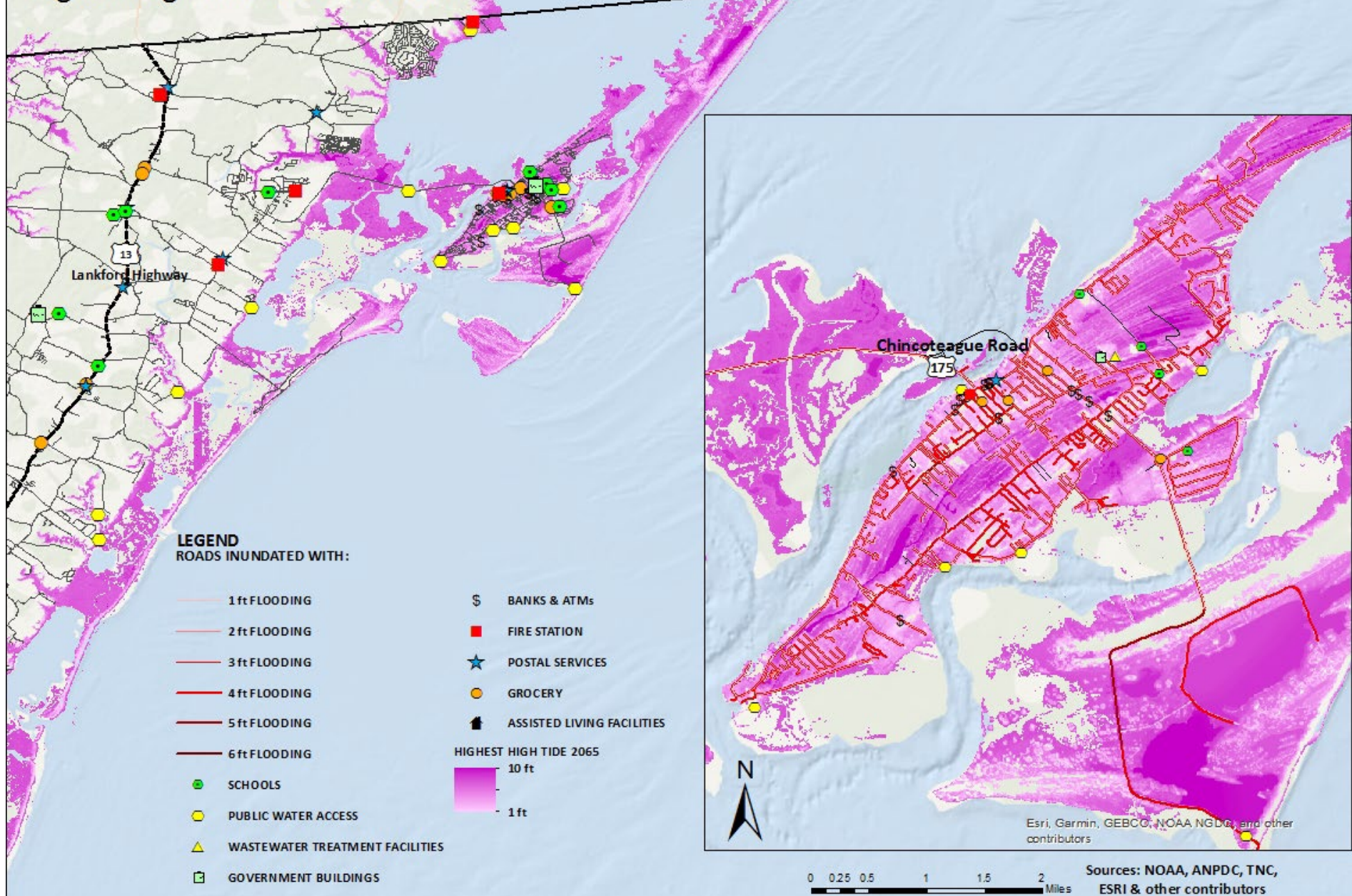
**The data/projections used are for an extreme SLR scenario. The Storm Surge data layer is not yet available for 2030. The inundation represented is incomplete.



Sources: NOAA, ANPDC, TNC, ESRI & other contributors

Chincoteague Critical Infrastructure Map

Highest High Tide 2065 Conditions



Chincoteague Critical Infrastructure Map

Storm Surge 2065 Conditions

