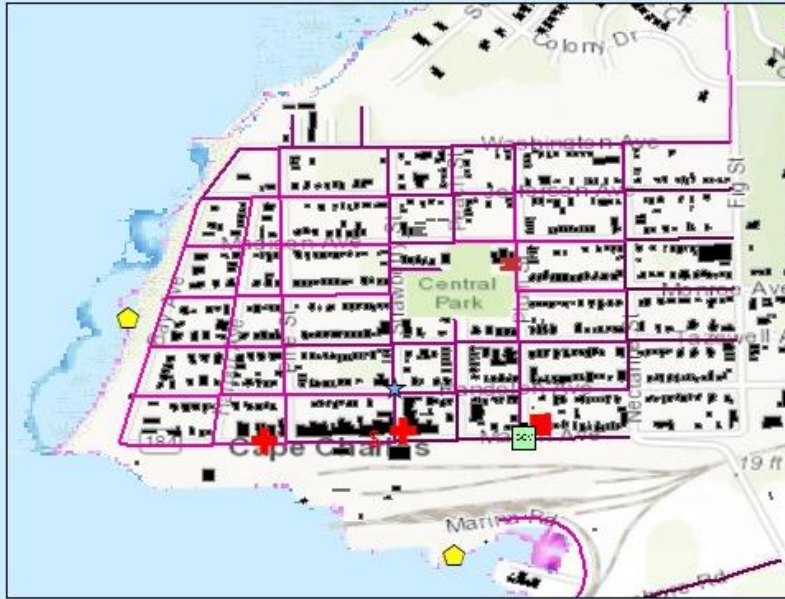


# Cape Charles Critical Infrastructure Map

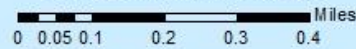
## 2030 High Tide Conditions



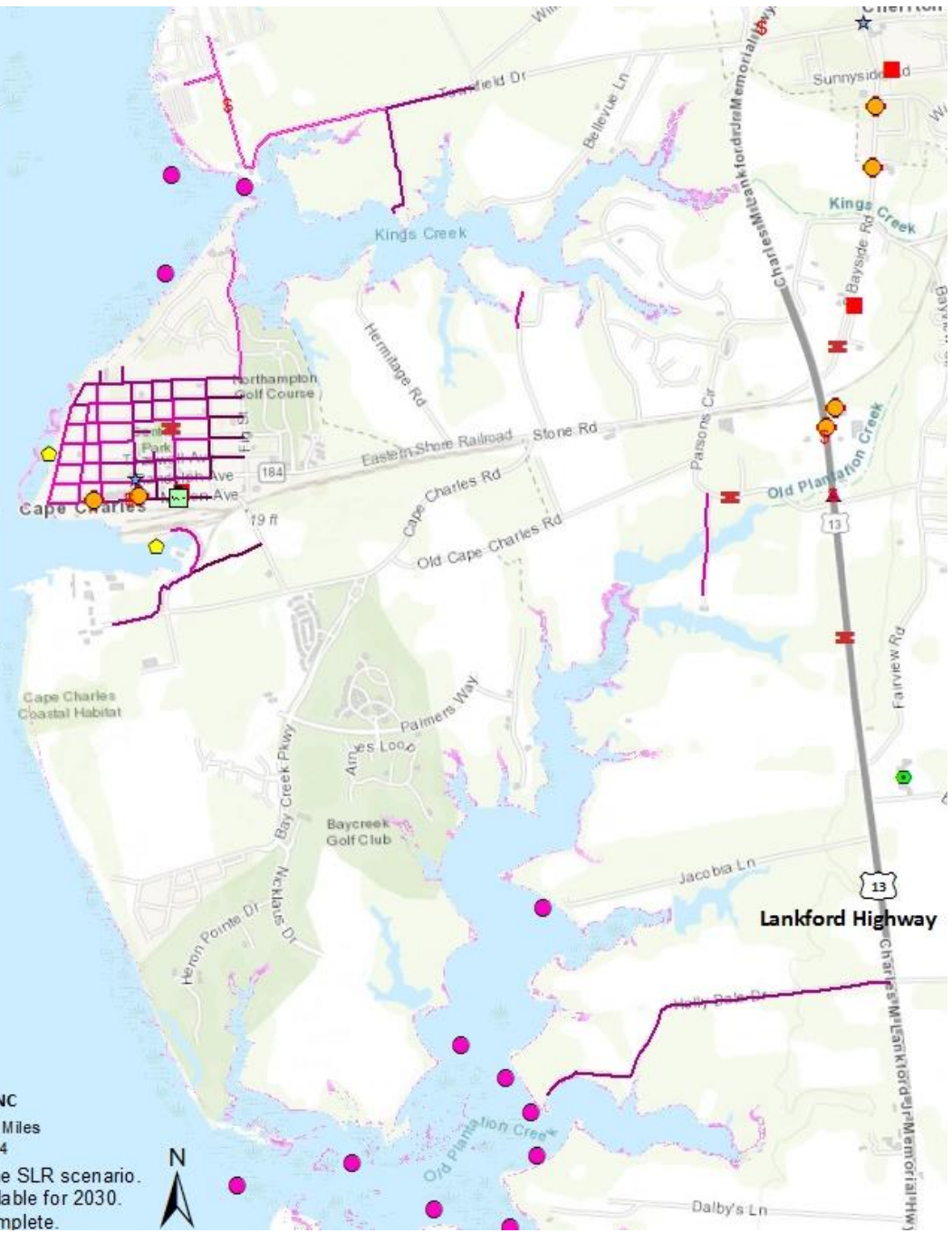
### LEGEND

- PUBLIC WATER ACCESS
- SHELFISH AQUACULTURE
- TRANSIT
- SCHOOLS
- FIRE STATION
- POSTAL SERVICES
- OIL & GAS COMPANIES
- MEDICAL CENTERS
- GROCERIES
- GOVT. BUILDINGS
- BANKS & ATMs
- 3 ft FLOODING
- 4 ft FLOODING
- 5 ft FLOODING
- 6 ft FLOODING
- HIGHEST HIGH TIDE 2030  
High : 7 ft  
Low : 1 ft
- UNDER 1 ft FLOODING
- 1 ft FLOODING
- 2 ft FLOODING

Source: NOAA, ANPDC AND TNC

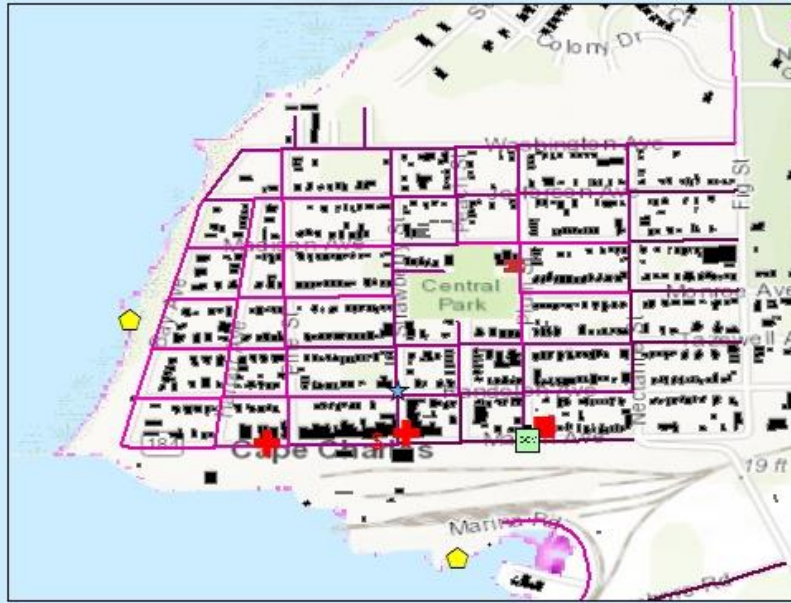


The data/projections used are for an extreme SLR scenario.  
The Storm Surge data layer is not yet available for 2030.  
The inundation represented is incomplete.



# Cape Charles Critical Infrastructure Map

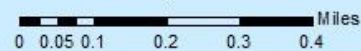
## 2040 High Tide Conditions



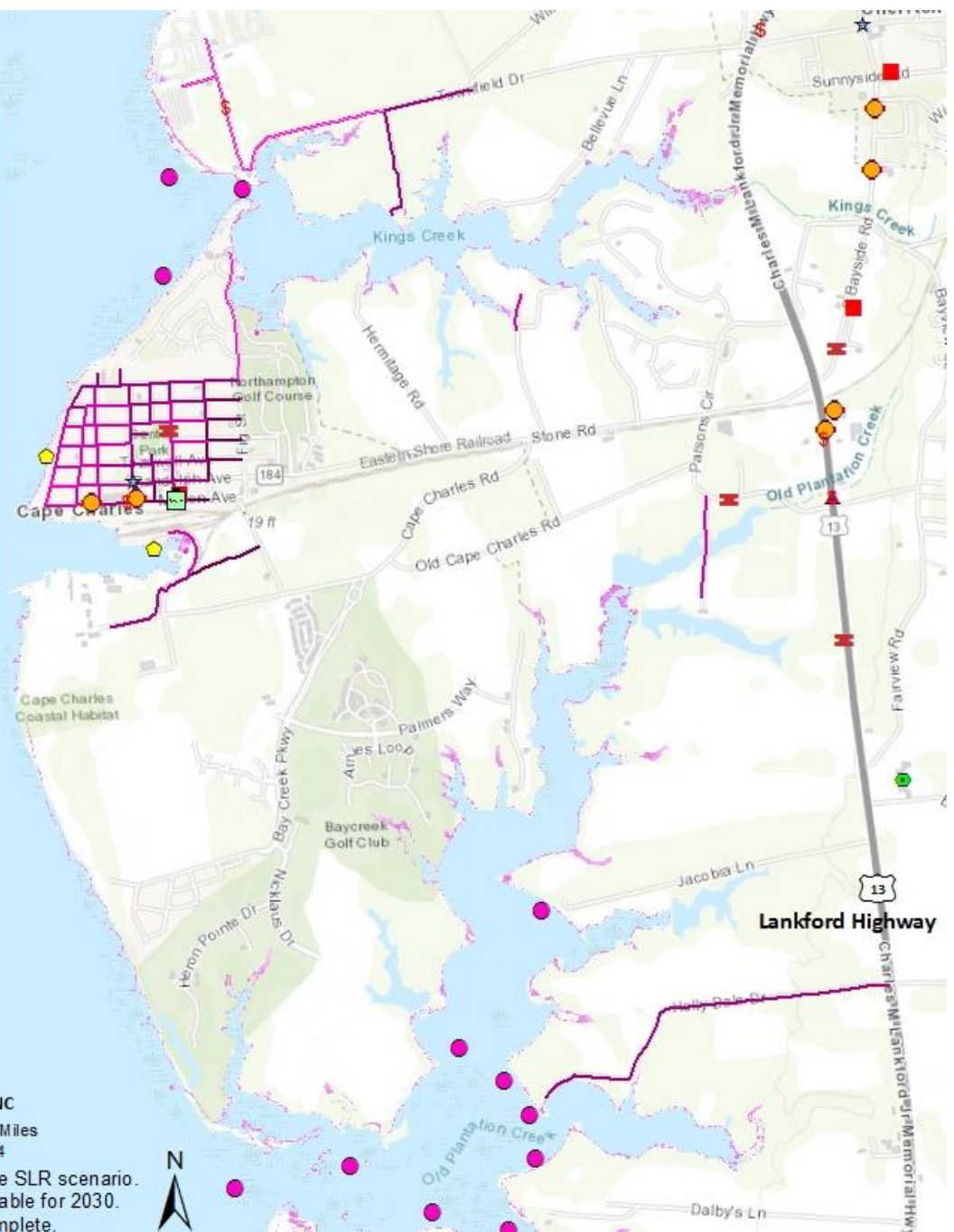
### LEGEND

- |  |                      |  |                        |
|--|----------------------|--|------------------------|
|  | PUBLIC WATER ACCESS  |  | 3 ft FLOODING          |
|  | SHELFISH AQUACULTURE |  | 4 ft FLOODING          |
|  | TRANSIT              |  | 5 ft FLOODING          |
|  | SCHOOLS              |  | 6 ft FLOODING          |
|  | FIRE STATION         |  | HIGHEST HIGH TIDE 2040 |
|  | POSTAL SERVICES      |  | High : 10 ft           |
|  | OIL & GAS COMPANIES  |  | Low : 1 ft             |
|  | MEDICAL CENTERS      |  |                        |
|  | GROCERIES            |  |                        |
|  | GOVT. BUILDINGS      |  |                        |
|  | BANKS & ATMs         |  |                        |
|  | UNDER 1 ft FLOODING  |  |                        |
|  | 1 ft FLOODING        |  |                        |
|  | 2 ft FLOODING        |  |                        |

Source: NOAA, ANPDC AND TNC

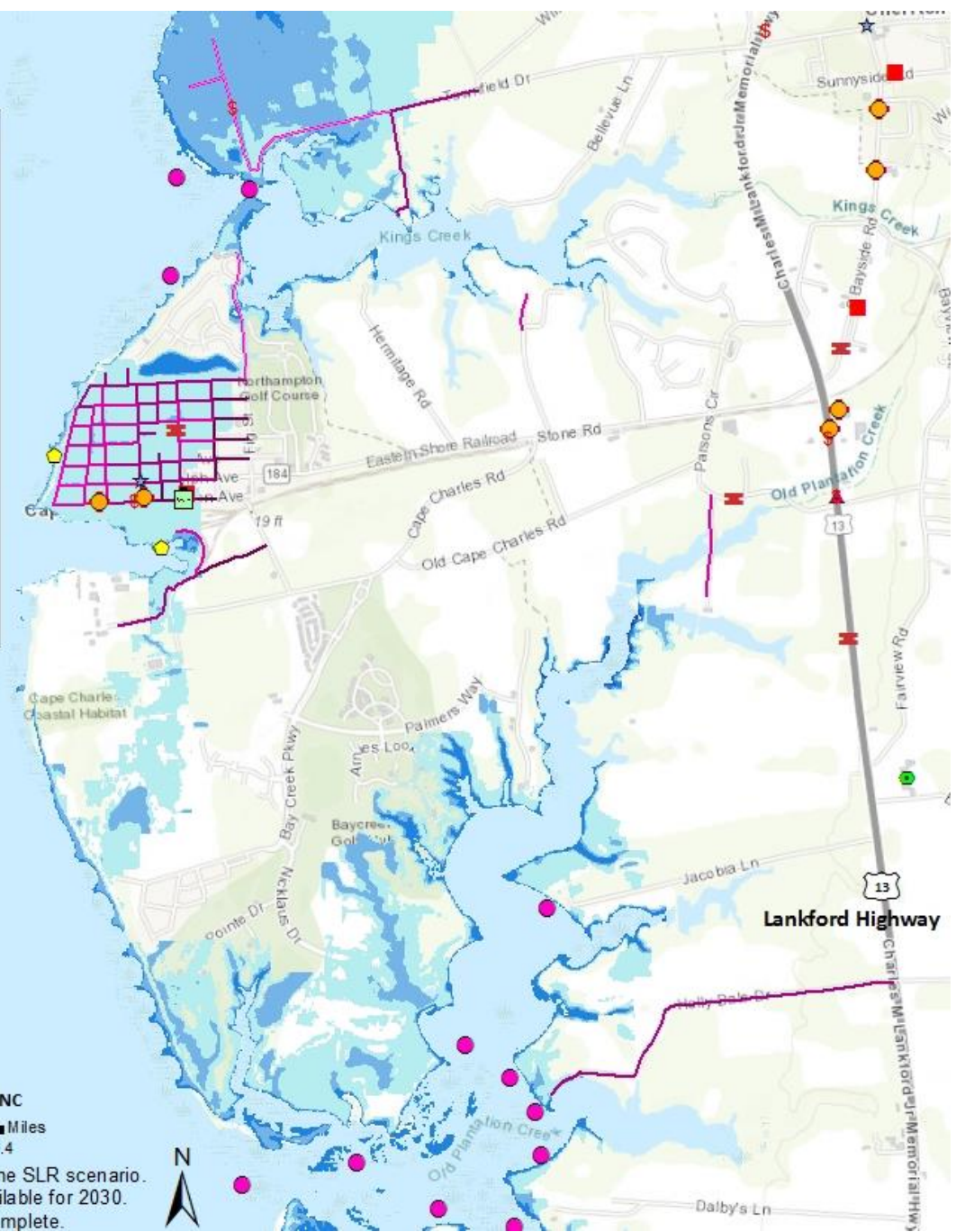
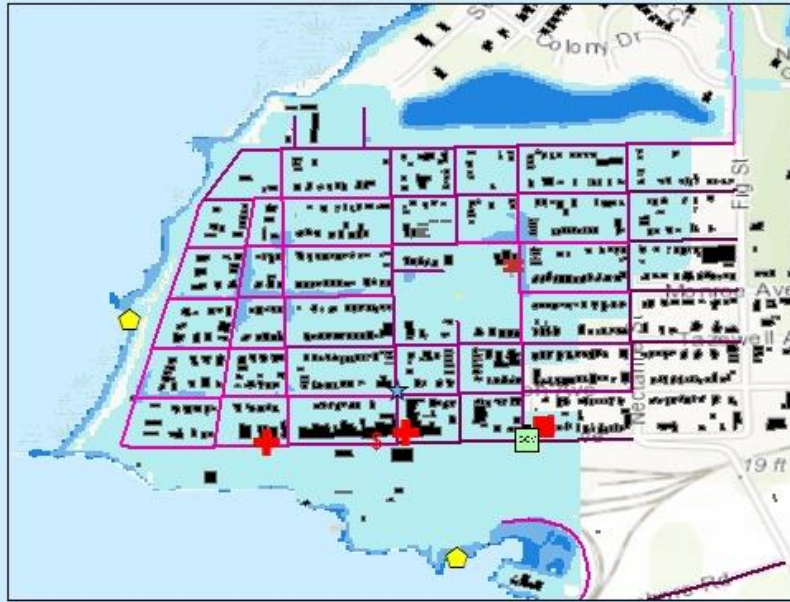


The data/projections used are for an extreme SLR scenario.  
The Storm Surge data layer is not yet available for 2030.  
The inundation represented is incomplete.



# Cape Charles Critical Infrastructure Map

## 2040 Storm Surge Conditions



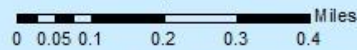
### LEGEND

- PUBLIC WATER ACCESS
- SHELFISH AQUACULTURE
- TRANSIT
- SCHOOLS
- FIRE STATION
- POSTAL SERVICES
- OIL & GAS COMPANIES
- MEDICAL CENTERS
- GROCERIES
- GOVT. BUILDINGS
- BANKS & ATMs
- 3 ft FLOODING
- 4 ft FLOODING
- 5 ft FLOODING
- 6 ft FLOODING

- ### STORM SURGE 2040
- 1.0 - 4.0 ft
  - 4.1 - 8.0 ft
  - 8.1 - 12.0 ft
  - 12.1 - 16.0 ft
  - 16.1 - 22.0 ft

- UNDER 1 ft FLOODING
- 1 ft FLOODING
- 2 ft FLOODING

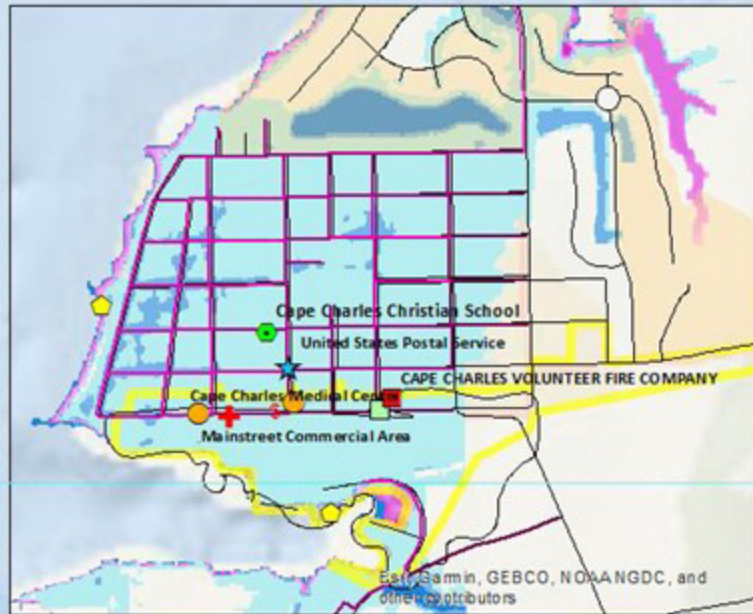
Source: NOAA, ANPDC AND TNC



The data/projections used are for an extreme SLR scenario.  
 The Storm Surge data layer is not yet available for 2030.  
 The inundation represented is incomplete.



# Cape Charles Critical Infrastructure and Vulnerability Map 2065 Conditions



## LEGEND

- |  |                       |                               |                            |
|--|-----------------------|-------------------------------|----------------------------|
|  | PUBLIC WATER ACCESS   |                               | 4 ft FLOODING              |
|  | SHELFISH AQUACULTURE  |                               | 5 ft FLOODING              |
|  | TRANSIT LOCATIONS     |                               | 6 ft FLOODING              |
|  | SCHOOLS               |                               | ROADS                      |
|  | FIRE STATIONS         |                               | MAINSTREET COMMERCIAL AREA |
|  | POSTAL SERVICES       |                               | PROTECTED LANDS            |
|  | OIL & GAS COMPANIES   | <b>STORM SURGE 2065</b>       |                            |
|  | EMERGENCY CENTERS     |                               | 1.0 - 4.0 ft               |
|  | GROCERIES             |                               | 4.1 - 8.0 ft               |
|  | GOVT. BUILDINGS       |                               | 8.1 - 12.0 ft              |
|  | BANKS & ATMs          |                               | 12.1 - 16.0 ft             |
|  | ROADS SUBMERGED WITH: |                               | 16.1 - 22.0 ft             |
|  | UNDER 1 ft FLOODING   | <b>HIGHEST HIGH TIDE 2065</b> |                            |
|  | 1 ft FLOODING         |                               | High : 10 ft               |
|  | 2 ft FLOODING         |                               | Low : 1 ft                 |
|  | 3 ft FLOODING         |                               |                            |



Sources: NOAA, TNC, ESRI and other contributors

