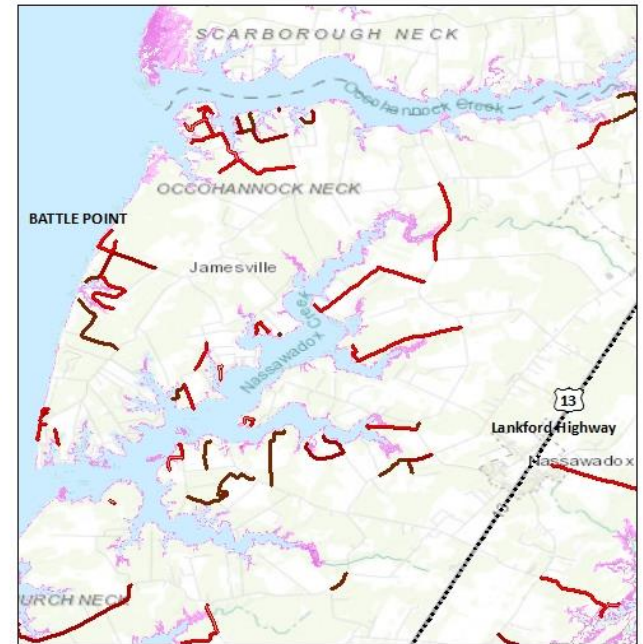


# Battle Point Critical Infrastructure Map- 2030 High Tide Conditions



## LEGEND

### ROADS SUBMERGED WITH:

- UNDER 1 ft FLOODING
- 1 ft FLOODING
- 2 ft FLOODING
- 3 ft FLOODING
- 4 ft FLOODING
- 5 ft FLOODING
- 6 ft FLOODING

▲ ASSISTED LIVING

▲ PUBLIC WATER ACCESS

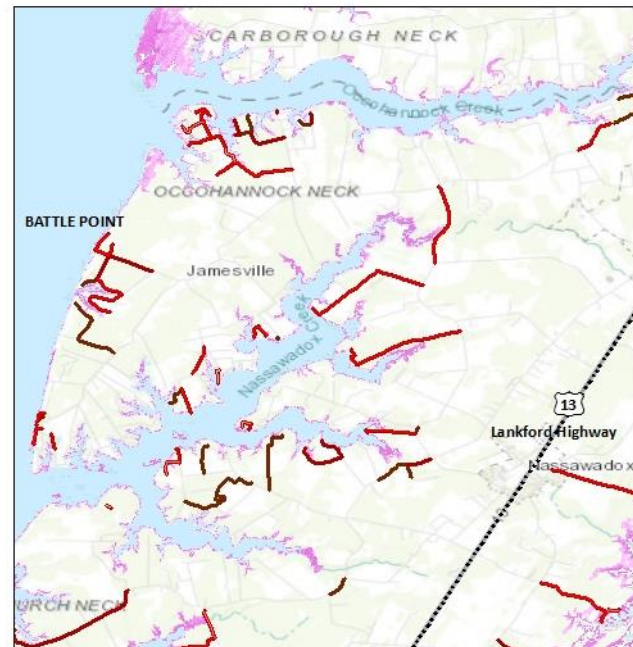
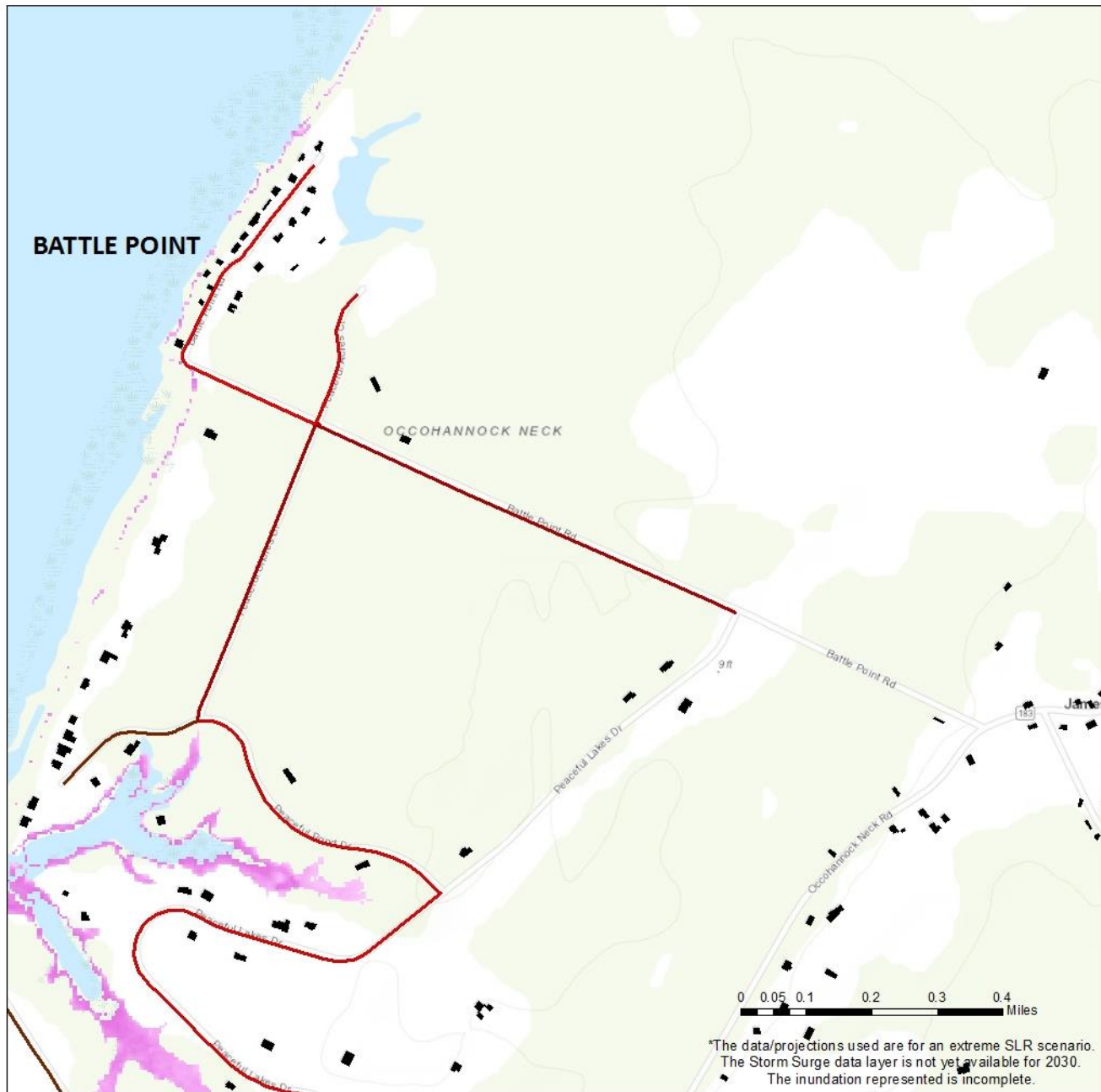
### HIGHEST HIGH TIDE 2030

- High : 7.5 ft
- Low : 1 ft

Sources: NOAA, ANPDC, TNC, ESRI  
& other contributors



# Battle Point Critical Infrastructure Map- 2040 High Tide Conditions



## LEGEND

### ROADS SUBMERGED WITH:

- UNDER 1 ft FLOODING
- 1 ft FLOODING
- 2 ft FLOODING
- 3 ft FLOODING
- 4 ft FLOODING
- 5 ft FLOODING
- 6 ft FLOODING

■ ASSISTED LIVING

◆ PUBLIC WATER ACCESS

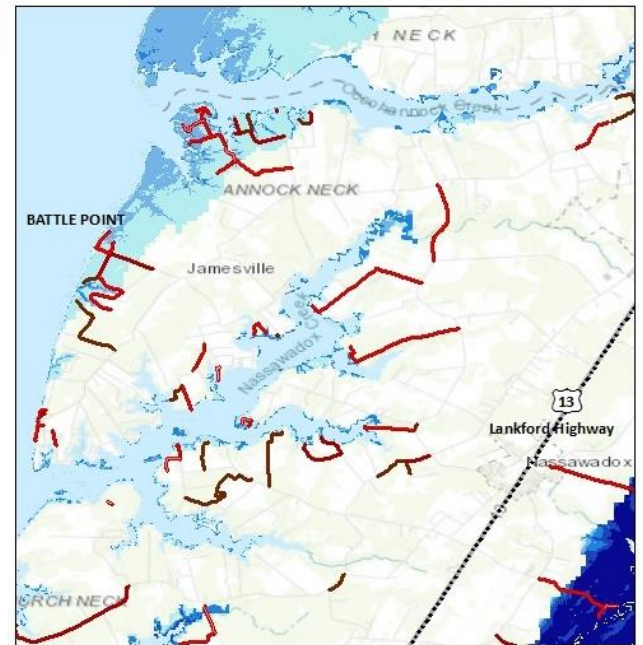
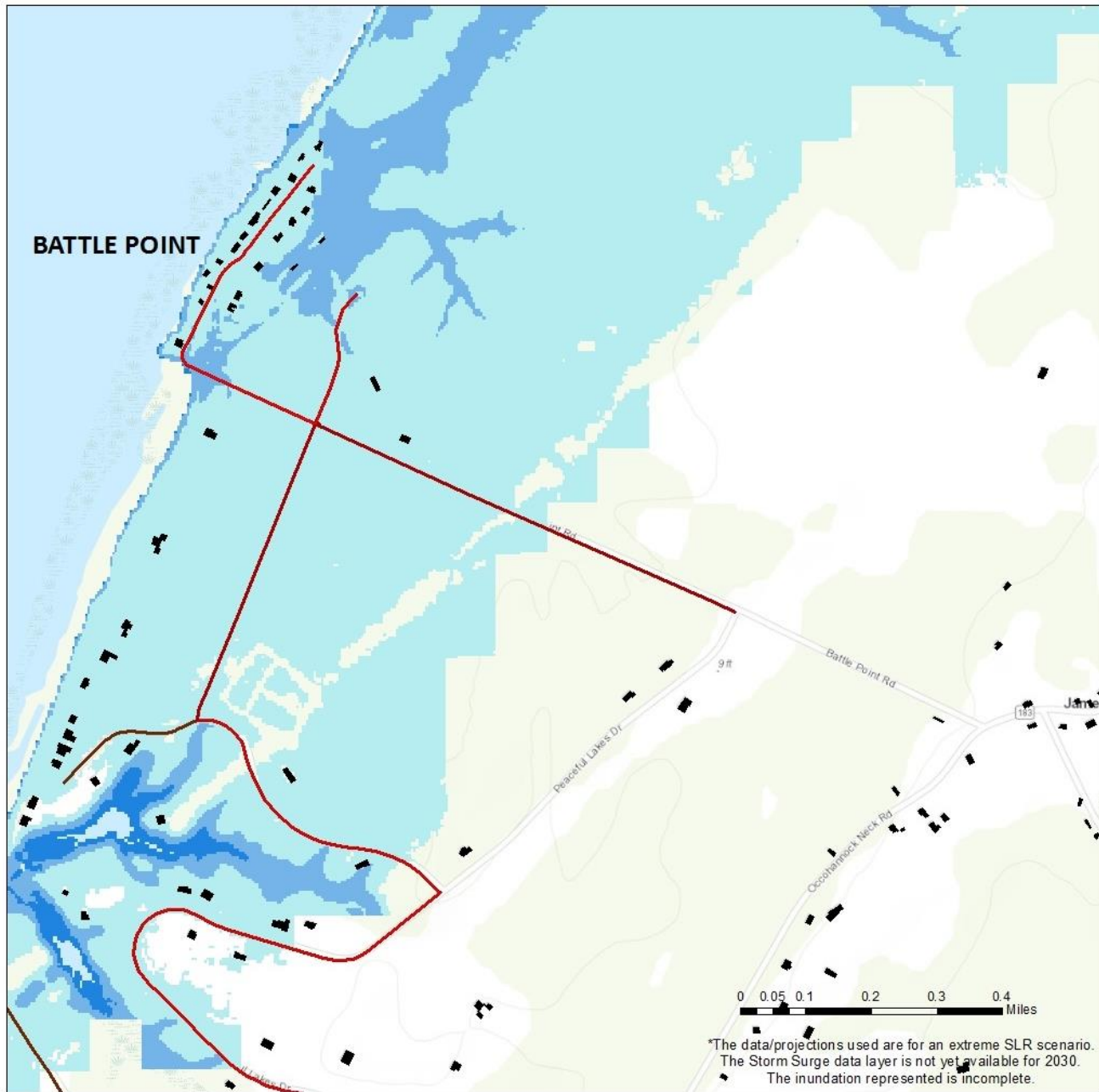
### HIGHEST HIGH TIDE 2040

- High : 10 ft
- Low : 1 ft

Sources: NOAA, ANPDC, TNC, ESRI & other contributors



# Battle Point Critical Infrastructure Map- 2040 Storm Surge Conditions



## LEGEND

ROADS SUBMERGED WITH:	STORM SURGE 2040
UNDER 1 ft FLOODING	1.0 - 4.0 ft
1 ft FLOODING	4.1 - 8.0 ft
2 ft FLOODING	8.1 - 10.0 ft
3 ft FLOODING	10.1 - 16.0 ft
4 ft FLOODING	16.1 - 22.0 ft
5 ft FLOODING	
6 ft FLOODING	
ASSISTED LIVING	
PUBLIC WATER ACCESS	

\*The data/projections used are for an extreme SLR scenario.  
 The Storm Surge data layer is not yet available for 2030.  
 The inundation represented is incomplete.

Sources: NOAA, ANPDC, TNC, ESRI  
 & other contributors

