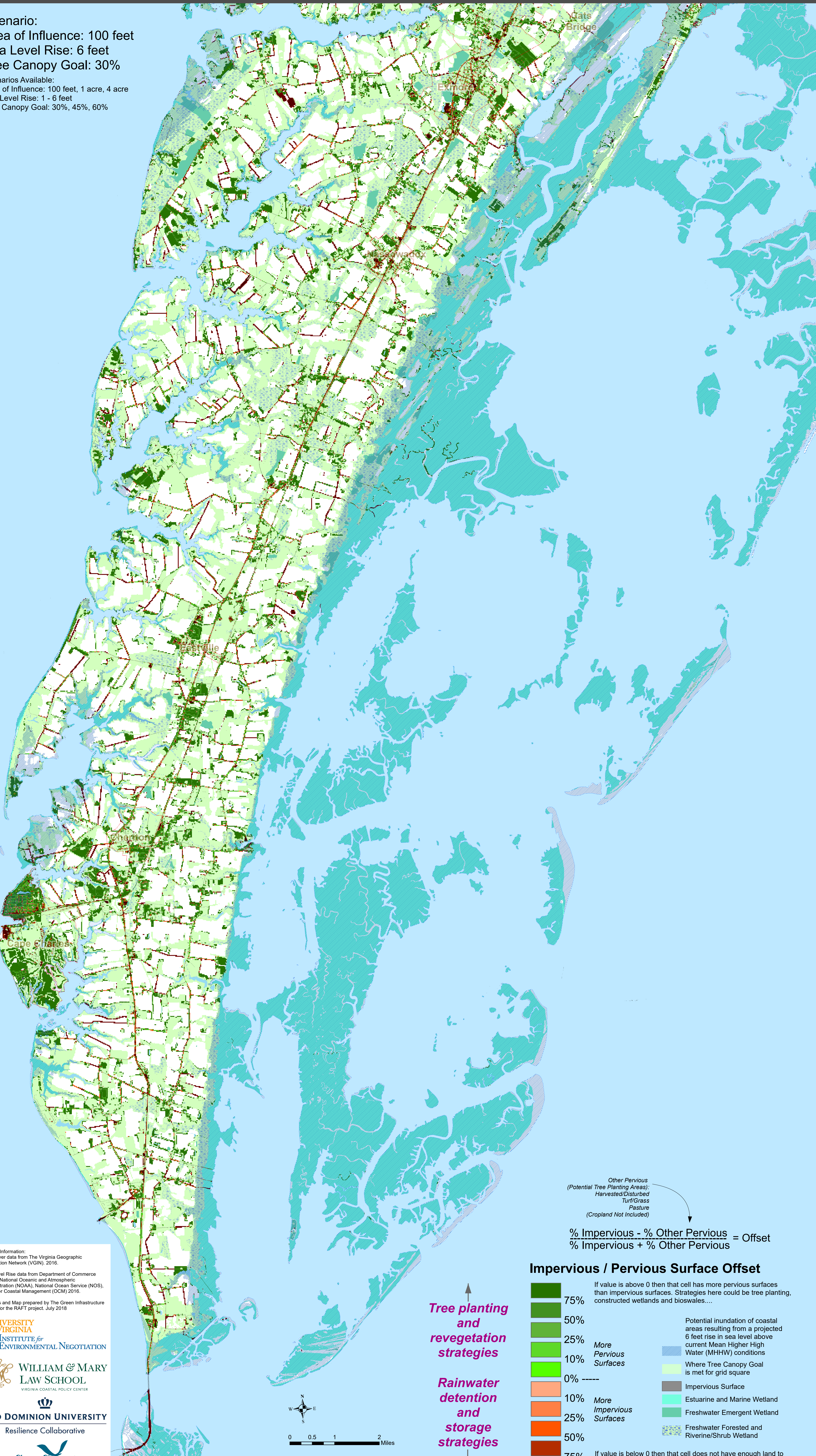
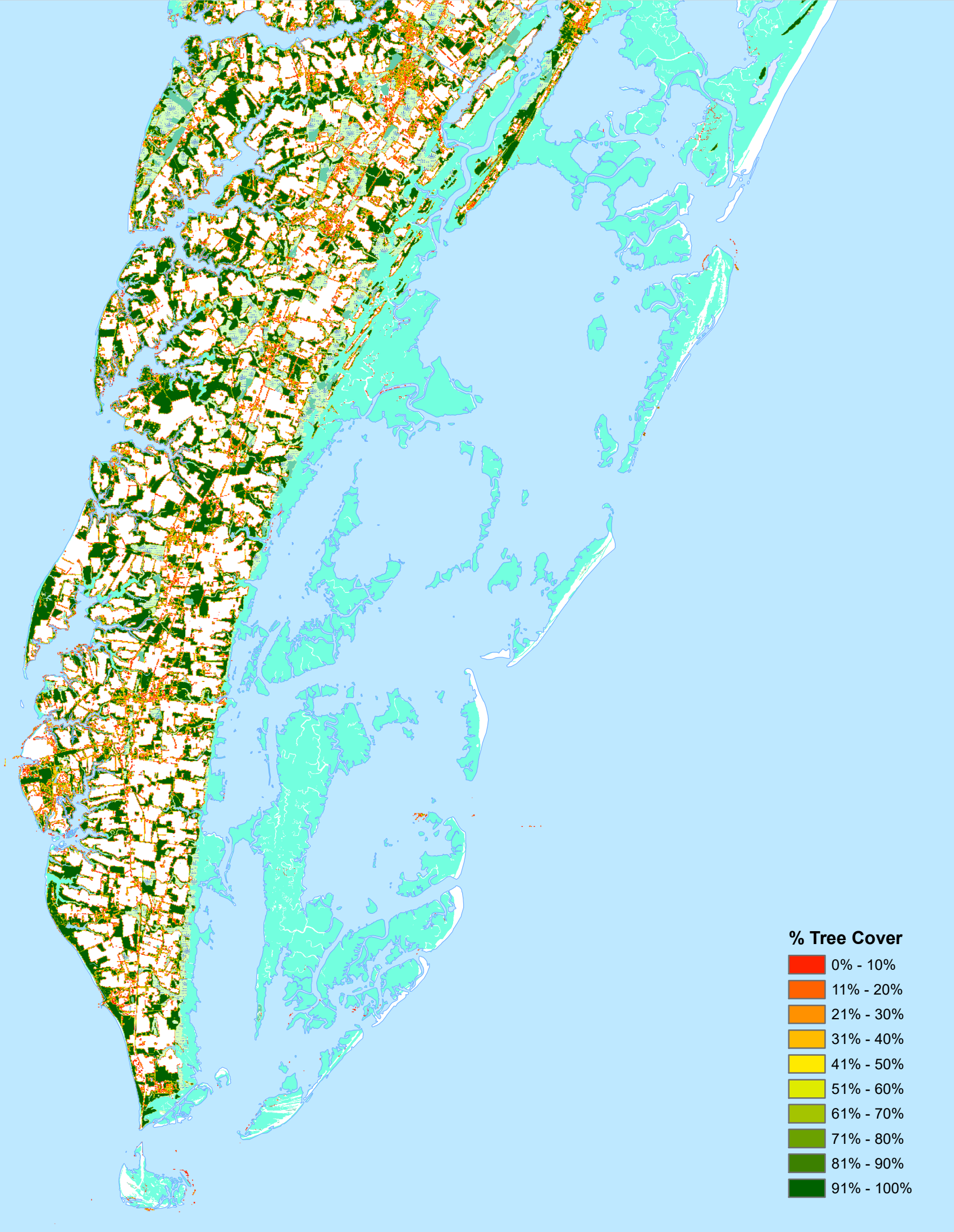


Scenario:
 Area of Influence: 100 feet
 Sea Level Rise: 6 feet
 Tree Canopy Goal: 30%

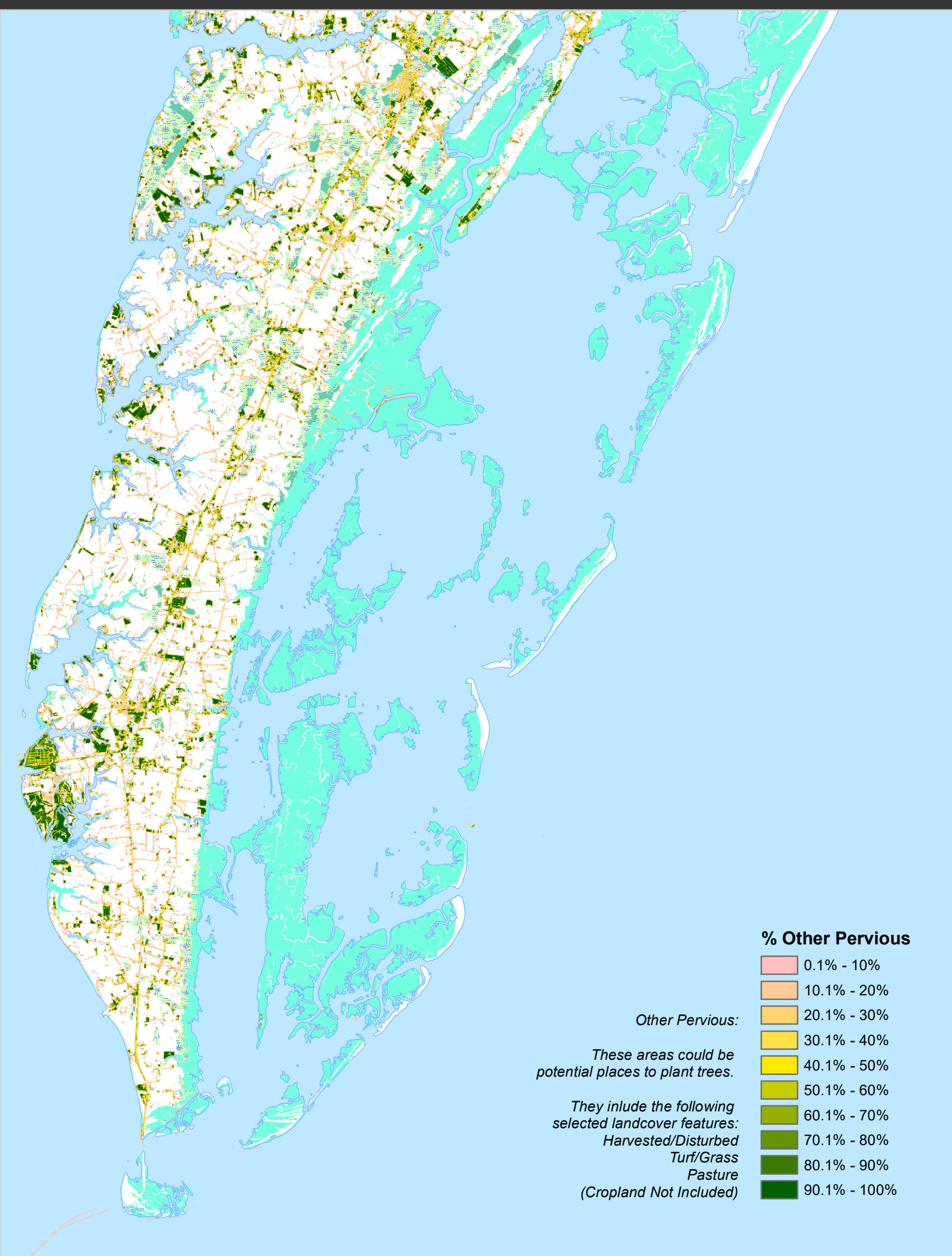
Scenarios Available:
 Area of Influence: 100 feet, 1 acre, 4 acre
 Sea Level Rise: 1 - 6 feet
 Tree Canopy Goal: 30%, 45%, 60%



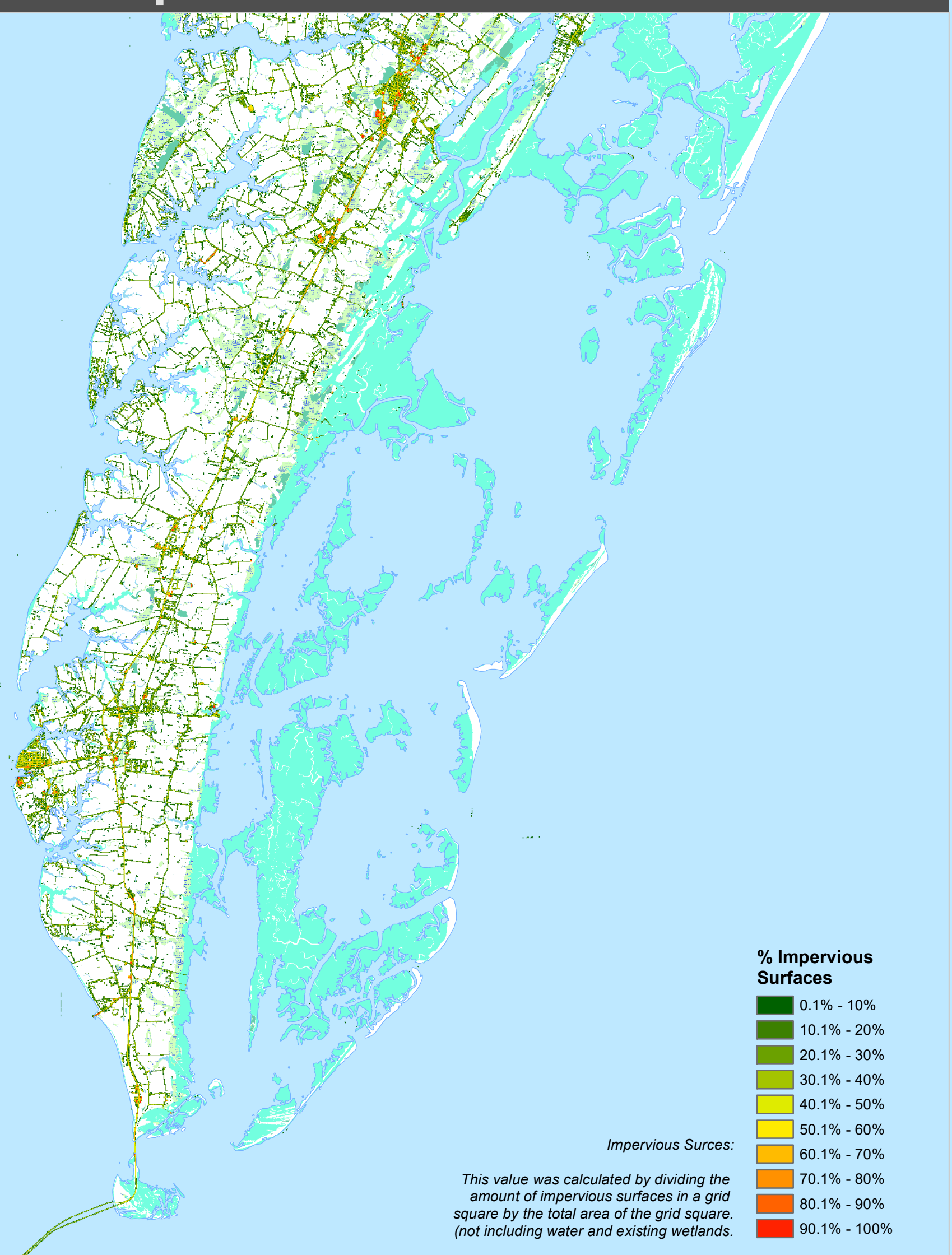
% Tree Cover



% Other Pervious



% Impervious Surfaces

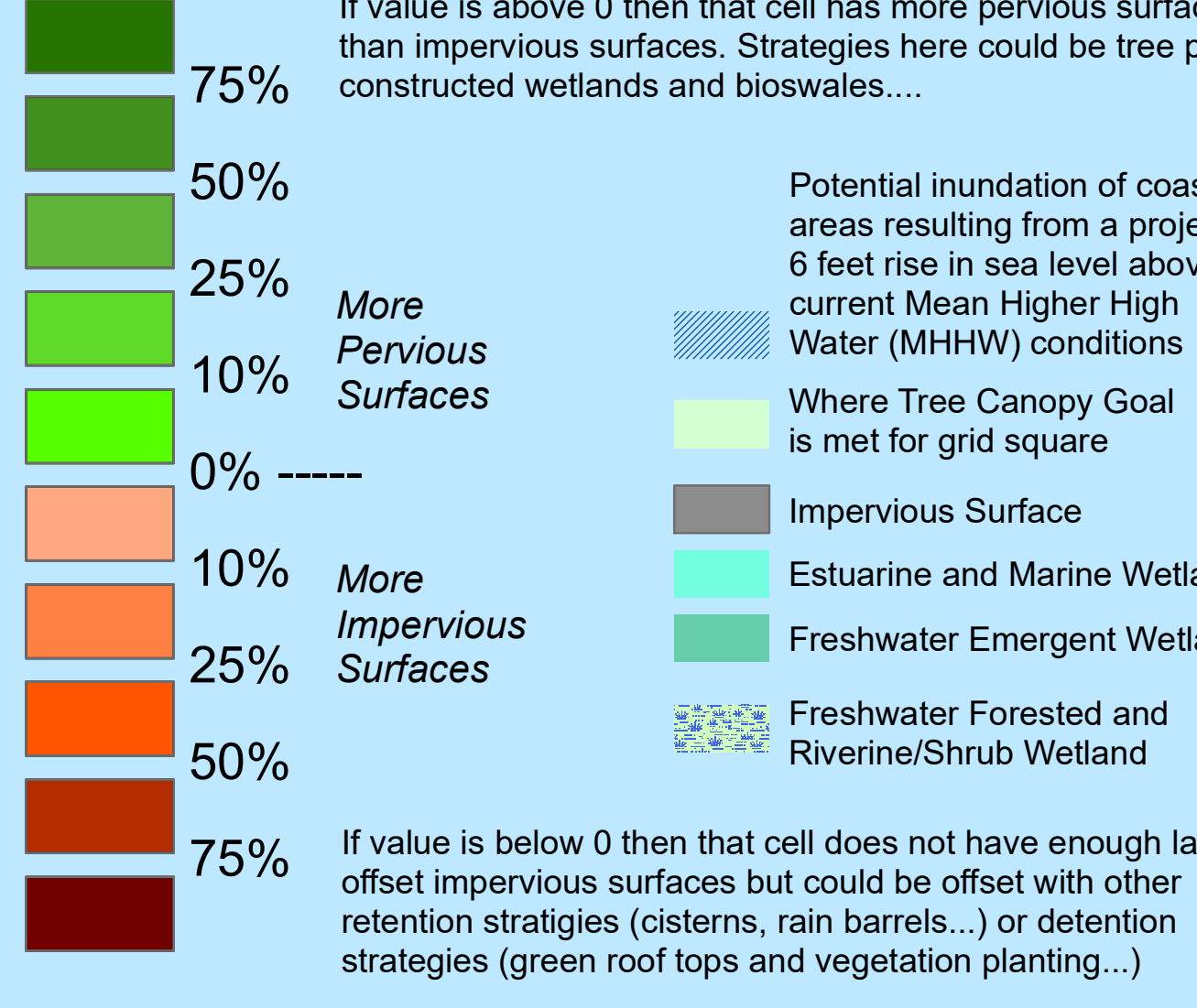


Other Pervious (Potential Tree Planting Areas):
 Harvested/Disturbed Turf/Grass
 Pasture
 (Cropland Not Included)

$$\% \text{ Impervious} - \% \text{ Other Pervious} = \text{Offset}$$

$$\% \text{ Impervious} + \% \text{ Other Pervious} = \text{Offset}$$

Impervious / Pervious Surface Offset



Tree planting and revegetation strategies

Rainwater detention and storage strategies

Source Information:
 Landcover data from The Virginia Geographic Information Network (VGIN), 2016

Sea Level Rise data from Department of Commerce (DOC), National Oceanic and Atmospheric Administration (NOAA), National Ocean Service (NOS), Office for Coastal Management (OCM) 2016.

Analysis and Map prepared by The Green Infrastructure Center for the RAFT project, July 2018

UNIVERSITY OF VIRGINIA
 INSTITUTE for ENVIRONMENTAL NEGOTIATION

WILLIAM & MARY
 LAW SCHOOL
 VIRGINIA COASTAL POLICY CENTER

OLD DOMINION UNIVERSITY
 Resilience Collaborative

Sea Grant
 Virginia

